

ASSA ABLOY

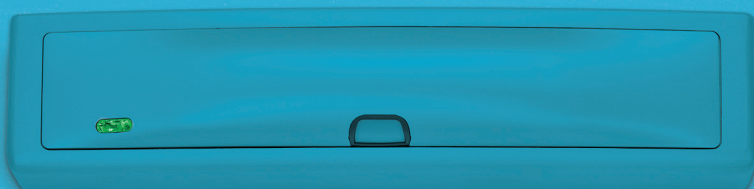
Opening Solutions

Experience a safer
and more open world

HES & Securitron Products 2021 Pricelist

US & Canada Effective date
May 1, 2021

ASSA ABLOY



Experience a safer
and more open world

Electronic Security
Hardware
HES & Securitron
Products

.....

2021 Pricelist

Table of Contents

Electric Strikes	
HES® 1006	2
HES 1500	4
HES 1600	5
NEW HES ES100	6
HES 4500C	7
HES 5000, 5200	8
HES 7000	9
HES 7501	9
HES 8000, 8300	10
HES 8500	11
Securitron® UNL, MUNL	11
HES 9400, 9500, 9600, 9700, 9800	12
HES Folger Adam SB:310-1(X), 310-2	13
HES Folger Adam 310-2 3/4, 310-2 3/4 OB	14
HES Folger Adam 310-3-1	14
HES Folger Adam 310-4, 310-4 (S)	15
HES Folger Adam 310-4-X	15
HES Folger Adam 310-6-X	17
HES Folger Adam 310-1-X	19
HES Folger Adam 712, 712-75	20
HES Folger Adam 732, 732-75	20
HES Folger Adam SB710, SB710-75	21
HES Folger Adam SB730, SB730-75	21
HES Folger Adam 742-75	22
HES Folger Adam SB740-75	22
HES Electric Strike Accessories	23
Electromagnetic Locks	
Intelligent Maglocks®	
Securitron M380E EcoMag	24
Securitron M680E EcoMag	24
Delayed Egress Maglocks	
Securitron iMXDa	25
Durable Maglocks	
Securitron M32	25
Securitron M62	26
Securitron M82	26
Securitron M32, M62, M82 Brackets	27
Securitron M32, M62, M82 Lock Housing	27
Securitron M32, M62, M82 Dress Covers	28
Securitron M32, M62, M82 Accessories	28
Securitron M38	29
Securitron M68	29
Securitron Universal Maglock Accessories	30
Securitron DM62	30
Recessed Maglocks	
Securitron M34R	31
Shear Aligning Maglocks	
Securitron SAM, SAM2	31
Cabinet Locks	
HES 610	32
HES 660	32
HES 630REL	32
HES K20	33
HES KP20	33
HES K100-622H Aperio® Cabinet Lock	33
HES K200 Wiegand Cabinet Lock	34
HES KS200 Wiegand Server Cabinet Lock	34
Securitron MCL	34
Securitron M32-SS	34
Specialty Locks	
Securitron GL1	35
Securitron MM15	35
Keypads & Card Readers	
Stand Alone Keypads	
Securitron DK-12	36
Keypad Systems	
Securitron DK-16	36
Securitron DK-26	36
Wiegand Keypads	
Securitron DK-37	36
Securitron DK-38	36
Aperio Card Reader	
Securitron R100H	36
Push Buttons & Egress Devices	
Securitron XMS Exit Motion Sensor	37
Emergency Exit Buttons	
Securitron EEB	37
Push Buttons	
Securitron PB	37
Securitron PB2	38
Securitron PB3	38
Securitron PB4L	39
Securitron PB5	39
Securitron MK Mortise Key Switch	39
Securitron KP-1 Tubular Key Switch	40
Securitron WSS Wave Sense Switch	40
Securitron SP-1 Capacitive Button	40
Egress Bars	
Securitron DSB	41
Securitron TSB	41
Securitron EMB	42
Egress Handles	
Securitron TSH	42
Securitron EMH	42
Power	
Securitron AQ Series Power Supplies	43
Securitron AQL Series Power Supplies	44
Securitron BPS Linear Power Supplies	45
Securitron EcoPower®	45
Securitron BPSS Solar Power Supplies	46
Securitron AQE Single-Port PoE	46
Securitron PSP Plug-In Power Supplies	47
Other Power Products	47
Power Transfers	
Securitron CEPT Concealed Electrical Power Transfers	48
Securitron SEPT Square-Cut Electrical Power Transfers	48
Securitron EPT Electrical Power Transfers	49
Securitron EH Electric Hinges	49
Securitron TSB-C Door Cords	49
Accessories	
Securitron TM-2, TM-9, DT-7 & PZ1 Timers & Alarms	50
Securitron BA-DPA Door Prop Alarm Monitoring	50
Securitron DPS Door Position Switches	50
Securitron MSS Magnetic Switch/High Security	51
Securitron LM Latch Monitoring	51
Securitron RLP, RB-4 Relay Logic Packs & Boards	51
Terms & Conditions Warranty	
Terms & Conditions, Warranties	52

Electric Strikes

HES 1006CLB Complete Pacs for Latchbolt Locks

MODEL	DESCRIPTION	630
1006CLB		\$628
1006CLB-F	Fail Safe	\$628
1006CLB-LBM		\$745
1006CLB-F-LBM	Fail Safe	\$745
1006CLB-LBSM		\$755
1006CLB-F-LBSM	Fail Safe	\$755



HES 1006CDB Complete Pacs for Locks with Deadbolts

MODEL	DESCRIPTION	630
1006CDB		\$653
1006CDB-F	Fail Safe	\$653

HES 1006CAS Complete Pacs for Locks with Deadbolts

MODEL	DESCRIPTION	630
1006CAS		\$659
1006CAS-F	Fail Safe	\$659
1006CAS-2		\$686
1006CAS-2-F	Fail Safe	\$686

HES 1006CS Complete Pacs for Latchbolts & Deadbolts

MODEL	DESCRIPTION	630
1006CS		\$690
1006CS-F	Fail Safe	\$690

HES 1006 Electric Strike Bodies

MODEL	DESCRIPTION	605	606	612	613	629	630	BLK
1006		\$682	\$668	\$668	\$639	\$682	\$590	\$612
1006-F	Fail Safe	\$682	\$668	\$668	\$639	\$682	\$590	\$612
1006-LBM		\$799	\$786	\$786	\$756	\$799	\$708	\$729
1006-F-LBM	Fail Safe	\$799	\$786	\$786	\$756	\$799	\$708	\$729
1006-LBSM		\$810	\$796	\$796	\$768	\$810	\$718	\$740
1006-F-LBSM	Fail Safe	\$810	\$796	\$796	\$768	\$810	\$718	\$740

Faceplates

MODEL	DESCRIPTION	605	606	612	613	629	630	BLK
LB	Kit includes J, KM and KD faceplates						\$38	
DB	Kit includes faceplates and brackets to make N and H series options						\$63	
DB2	Kit includes faceplates and brackets to make N-2 and H-2 series options						\$90	
J		\$108	\$98	\$98	\$59	\$98	\$37	\$59
KD		\$108	\$98	\$98	\$59	\$98	\$37	\$59
KM		\$108	\$98	\$98	\$59	\$98	\$37	\$59
ND		\$109	\$96	\$96	\$78	\$96	\$57	\$78
NM		\$109	\$96	\$96	\$78	\$96	\$57	\$78
HM		\$109	\$96	\$96	\$78	\$96	\$57	\$78
HTD		\$109	\$96	\$96	\$78	\$96	\$57	\$78

Specialty Faceplates

MODEL	605	606	612	613	629	630	BLK
E	\$110	\$98	\$98	\$78	\$98	\$57	\$78
R	\$110	\$98	\$98	\$78	\$98	\$57	\$78
Z	\$109	\$96	\$96	\$60	\$96	\$38	\$60
J-2	\$122	\$106	\$106	\$95	\$106	\$73	\$95
KM-2	\$122	\$106	\$106	\$95	\$106	\$73	\$95

How to Orders on next page

Accessories

ITEM	DESCRIPTION	PRICE
157	Torx screws	\$14
1000-102	Rain guard	\$36
1000-104	Lip extension trim adapter (BLK)	\$66
1000-110	Replacement strike plate	\$108
1000-130	KD filler plate	\$48
1006-103	Full keeper shims	\$12
1006-105	Trim enhancer (BLK)	\$34

How to Order Specify quantity and the following information. Order related products separately.

SERIES	MODEL	FAIL SAFE/SECURE	FINISH*	OPTION(S)
1006	—	– F	– 630	– LBM
1006 Universal Electric Strike Faceplates ordered separately	CS** Complete Electric Strike; includes the HES SMART Pac® III and J, KD, KM, HM, and AD faceplates	F Fail Safe/Secure (blank) Fail Secure (standard)	605 Bright Brass	LBM Latchbolt Monitor LBSM Latchbolt Strike Monitor
	CLB Complete Electric Strike for latchbolt locks; includes the J, K, KD, and KM faceplates		606 Satin Brass	
	CDB** Complete Electric Strike for Deadbolt Locks; includes the HM and AD faceplates		612 Satin Bronze	
	CAS Complete Electric Strike for Deadbolt Locks; includes the ND and NM faceplates		613 Bronze Toned 629 Bright Stainless Steel 630 Satin Stainless Steel BLK Black	

*Complete Pacs are only available in the 630 finish. **Complete Pacs with deadbolts are not available with monitoring options.

HES 1500C Complete Pacs for Latchbolt Locks

MODEL	DESCRIPTION	605	606	612	613E	629	630	BSP
1500C		\$694	\$676	\$676	\$627	\$686	\$568	\$627
1500C-LM	Lock monitors	\$799	\$781	\$781	\$732	\$791	\$673	\$732
1500C-DLM	Dual lock monitors	\$904	\$886	\$886	\$837	\$896	\$778	\$837
1500C-LMS	Lock monitors & strike monitors	\$809	\$791	\$791	\$742	\$801	\$683	\$742
1500C-DLMS	Dual lock monitors & strike monitors	\$914	\$896	\$896	\$847	\$906	\$788	\$847



HES 1500 Electric Strike Bodies

MODEL	DESCRIPTION	605	606	612	613E	629	630	BSP
1500		\$601	\$591	\$591	\$557	\$601	\$525	\$557
1500-LM	Lock monitor	\$706	\$696	\$696	\$662	\$706	\$630	\$662
1500-DLM	Dual lock monitors	\$811	\$801	\$801	\$767	\$811	\$735	\$767
1500-LMS	Lock monitor & strike monitor	\$716	\$706	\$706	\$672	\$716	\$640	\$672
1500-DLMS	Dual lock monitors & strike monitor	\$821	\$811	\$811	\$777	\$821	\$745	\$777

Faceplates

MODEL	DESCRIPTION	605	606	612	613E	629	630	BSP
1LB	Kit includes 1J, 1K, 1KD and 1KM faceplates	\$93	\$85	\$85	\$70	\$85	\$43	\$70
1LB-2	Kit includes 1J-2 & 1KM-2 faceplates	\$121	\$114	\$114	\$99	\$114	\$72	\$99

Accessories

ITEM	DESCRIPTION	PRICE
157	Torx screws	\$14
OPT-1SRK	Optional spring replacement kit	\$47
OPT-1LM	Optional kit includes single lock monitor	\$109
OPT-1DLM	Optional kit includes dual lock monitors	\$218
MOD-1SOL	Solenoid replacement module	\$298

MODEL	DESCRIPTION	605	606	612	613E	629	630	BSP
1500-104	Lip extension trim adapter (finish to match)	\$85	\$79	\$79	\$64	\$79	\$40	\$64
1500-106	1500 filler plates and trim enhancer kit (finish to match)	\$78	\$71	\$71	\$57	\$71	\$33	\$57

How to Order Specify quantity and the following information. Order related products separately.

SERIES	MODEL	FINISH	OPTION(S)*
1500	—	— 630	— LM
1500 Universal Electric Strike faceplate option kits ordered separately	C Complete Electric Strike; includes 1LB faceplate kit for latchbolts	605 Bright Brass 606 Satin Brass 612 Satin Bronze 613E Dark Oxidized Satin Bronze Powder 629 Bright Stainless Steel 630 Satin Stainless Steel BSP Black Suede Powder	LM Lock Monitor DLM Dual Lock Monitor LMS Lock Monitor and Strike Monitor DLMS Dual Lock Monitors and Strike Monitor

*LMS/DLMS factory installed only option.

HES 1600CLB Complete Pacs for Latchbolt Locks

MODEL	DESCRIPTION	605	606	612	613E	629	630	BSP
1600-CLB		\$694	\$676	\$676	\$627	\$686	\$568	\$627
1600-CLB-LM	Lock monitor	\$799	\$781	\$781	\$732	\$791	\$673	\$732
1600-CLB-DLM	Dual lock monitor	\$904	\$886	\$886	\$837	\$896	\$778	\$837
1600-CLB-LMS	Lock monitor & strike monitor	\$809	\$791	\$791	\$742	\$801	\$683	\$742
1600-CLB-DLMS	Dual lock monitors & strike monitor	\$914	\$896	\$896	\$847	\$906	\$788	\$847

HES 1600CDB Complete Pacs for Locks with Deadbolts

MODEL	DESCRIPTION	605	606	612	613E	629	630	BSP
1600-CDB		\$694	\$676	\$676	\$627	\$686	\$568	\$627
1600-CDB-LM	Lock monitor	\$799	\$781	\$781	\$732	\$791	\$673	\$732
1600-CDB-DLM	Dual lock monitors	\$904	\$886	\$886	\$837	\$896	\$778	\$837
1600-CDB-LMS	Lock monitor & strike monitor	\$809	\$791	\$791	\$742	\$801	\$683	\$742
1600-CDB-DLMS	Dual lock monitors & strike monitor	\$914	\$896	\$896	\$847	\$906	\$788	\$847

HES 1600CS Complete Pacs for Latchbolt Locks & Deadlocks

MODEL	DESCRIPTION	605	606	612	613E	629	630	BSP
1600-CS		\$787	\$761	\$761	\$697	\$771	\$611	\$697
1600-CS-LM	Lock monitor	\$892	\$866	\$866	\$802	\$876	\$716	\$802
1600-CS-DLM	Dual lock monitors	\$997	\$971	\$971	\$907	\$981	\$821	\$907
1600-CS-LMS	Lock monitor & strike monitor	\$902	\$876	\$876	\$812	\$886	\$726	\$812
1600-CS-DLMS	Dual lock monitors & strike monitor	\$1007	\$981	\$981	\$917	\$991	\$831	\$917

HES 1600 Electric Strike Bodies

MODEL	DESCRIPTION	605	606	612	613E	629	630	BSP
1600		\$601	\$591	\$591	\$557	\$601	\$525	\$557
1600-LM	Lock monitor	\$706	\$696	\$696	\$662	\$706	\$630	\$662
1600-DLM	Dual lock monitors	\$811	\$801	\$801	\$767	\$811	\$735	\$767
1600-LMS	Lock monitor & strike monitor	\$716	\$706	\$706	\$672	\$716	\$640	\$672
1600-DLMS	Dual lock monitors & strike monitor	\$821	\$811	\$811	\$777	\$821	\$745	\$777

Faceplates

MODEL	DESCRIPTION	605	606	612	613E	629	630	BSP
1LB	Kit includes 1J, 1K, 1KD and 1KM faceplates	\$93	\$85	\$85	\$70	\$85	\$43	\$70
1LB-2	Kit includes 1J-2 & 1KM-2 faceplates	\$121	\$114	\$114	\$99	\$114	\$72	\$99
1DB	Kit includes faceplates and brackets to make 1N, 1ND, 1NM or 1NTD options	\$93	\$85	\$85	\$70	\$85	\$43	\$70
1DB-2	Kit includes faceplates and brackets to make 1N-2 option	\$121	\$114	\$114	\$99	\$114	\$72	\$99

Accessories

ITEM	DESCRIPTION	PRICE
157	Torx screws	\$14
OPT-1SRK	Optional spring replacement kit	\$47
OPT-1LM	Optional kit includes single lock monitor	\$109
OPT-1DLM	Optional kit includes dual lock monitors	\$218
MOD-1SOL	Solenoid replacement module	\$298

MODEL	DESCRIPTION	605	606	612	613E	629	630	BSP
1600-104	Lip extension trim adapter (finish to match)	\$85	\$79	\$79	\$64	\$79	\$40	\$64
1600-106	1600 filler plate and trim enhancer kit (finish to match)	\$78	\$71	\$71	\$57	\$71	\$33	\$57

How to Order Specify quantity and the following information. Order related products separately.

SERIES	MODEL	FINISH	OPTION(S)*
1600	- CS	- 630	- LM
1600 Universal Electric Strike; Faceplate option kits ordered separately	CS Complete Electric Strike; includes 1LB faceplate kit for latchbolts and 1DB faceplate kit for deadbolts	605 Bright Brass	LM Lock Monitor
	CLB Complete Electric Strike for Latchbolt Locks; includes 1LB faceplate kit for latchbolts	606 Satin Brass	DLM Dual Lock Monitor
	CDB Complete Electric Strike for Deadbolt Locks; includes 1DB faceplate kit for deadbolts	612 Satin Bronze	LMS Lock Monitor and Strike Monitor
		613E Dark Oxidized Satin Bronze Powder	DLMS Dual Lock Monitors and Strike Monitor
		629 Bright Stainless Steel	
		630 Satin Stainless Steel	
		BSP Black Suede Powder	

*LMS/DLMS factory installed only option.



HES ES100-15 Wireless Electric Strike

MODEL	DESCRIPTION	630
ES100-15LH	Aperio 1500 Wireless Electric Strike 1:1 Kit Latchbolts	\$1208
ES100-15LMH	Aperio 1500 Monitored Wireless Electric Strike 1:1 Kit Latchbolts	\$1313

Faceplates

MODEL	DESCRIPTION	605	606	612	613E	629	630	BSP
1LB	Kit includes 1J, 1K, 1KD and 1KM faceplates	\$93	\$85	\$85	\$70	\$85	\$43	\$70
1LB-2	Kit includes 1J-2 & 1KM-2 faceplates	\$121	\$114	\$114	\$99	\$114	\$72	\$99

Accessories

MODEL	DESCRIPTION	605	606	612	613E	629	630	BSP
1500-104	Lip extension trim adapter (finish to match)	\$85	\$79	\$79	\$64	\$79	\$40	\$64
1500-106	1500 filler plates and trim enhancer kit (finish to match)	\$78	\$71	\$71	\$57	\$71	\$33	\$57

HES ES100-15 Demo Mounts

ITEM	DESCRIPTION	PRICE
DEMO-ES100-15L-IPS-BSP	Demo Mount Kit ES100-15 Multiclass Black Suede Powder	\$1090

HES ES100-16 Wireless Electric Strike

MODEL	DESCRIPTION	630
ES100-16LH	Aperio 1600 Wireless Electric Strike 1:1 Kit Latchbolts	\$1208
ES100-16LMH	Aperio 1600 Monitored Wireless Electric Strike 1:1 Kit Latchbolts	\$1313
ES100-16SH	Aperio 1600 Wireless Electric Strike 1:1 Kit Latchbolts and Deadbolts	\$1268
ES100-16SMH	Aperio 1600 Monitored Wireless Electric Strike 1:1 Kit Latchbolts and Deadbolts	\$1373

Faceplates

MODEL	DESCRIPTION	605	606	612	613E	629	630	BSP
1LB	Kit includes 1J, 1K, 1KD and 1KM faceplates	\$93	\$85	\$85	\$70	\$85	\$43	\$70
1LB-2	Kit includes 1J-2 & 1KM-2 faceplates	\$121	\$114	\$114	\$99	\$114	\$72	\$99
1DB	Kit includes faceplates and brackets to make 1N, 1ND, 1NM or 1NTD options	\$93	\$85	\$85	\$70	\$85	\$43	\$70
1DB-2	Kit includes faceplates and brackets to make 1N-2 option	\$121	\$114	\$114	\$99	\$114	\$72	\$99

Accessories

MODEL	DESCRIPTION	605	606	612	613E	629	630	BSP
1600-104	Lip extension trim adapter (finish to match)	\$85	\$79	\$79	\$64	\$79	\$40	\$64
1600-106	1600 filler plate and trim enhancer kit (finish to match)	\$78	\$71	\$71	\$57	\$71	\$33	\$57

HES ES100 Accessories

ITEM	DESCRIPTION	PRICE
157	Torx screws	\$14
OPT-1SRK	Optional spring replacement kit	\$47
OPT-1LM	Optional kit includes single lock monitor	\$109
EXT-10-ANT	Aperio Hub External Antenna (Omni-directional)	\$53

How to Order Specify quantity and the following information. Order related products separately.

PRODUCT FAMILY	COMMUNICATION	MODEL SERIES	FACEPLATES	OPTIONS	CARD TECHNOLOGY	STRIKE FINISH
ES	100	- 15	L	H	-IPS	- 630
Electric Strike	100 Aperio Wireless	15 Reader and 1500 Strike 16 Reader and 1600 Strike	L Complete Pac for Latchbolts S* Complete Pac for Latchbolts and Deadbolts	H** Wholesale Kit MH** Wholesale Kit with Monitoring for High Security	IPS RFID (HID multiCLASS SE)	630 Satin Stainless Steel

*Available with 1600 Only. **Only available with L or S Complete Pac Options in 630 Finish.

HES ES100: The HES ES100 Electric Strike is available as either a pre-paired lock and hub kit (no certification required) or as a field configurable component (requires Aperio® Certified Integrator certification). Pre-paired kits support limited features. Field configured devices are required in order to support all options. Visit IntelligentOpenings.com to learn more.



HES 4500C Complete Pacs for Latchbolt Locks

MODEL	DESCRIPTION	605	606	612	613	629	630
4500C		\$731	\$718	\$718	\$683	\$731	\$640
4500C-LBM	Latchbolt monitor	\$850	\$835	\$835	\$801	\$850	\$757
4500C-LBSM	Latchbolt strike monitor	\$860	\$847	\$847	\$812	\$860	\$768



Accessories

ITEM	DESCRIPTION	PRICE
157	Torx screws	\$14
4500-105	Trim enhancer (BLK)	\$34
4500-110	Replacement strike plate	\$104
4500-131	Filler block	\$43
4501-1/2	1/2" stackable lip extension	\$58
4501-1	1" stackable lip extension	\$65

How to Order *Specify quantity and the following information. Order related products separately.*

SERIES	FINISH*	OPTION(S)
4500C	- 630	- LBM
4500C Complete Electric Strike; includes faceplates for cylindrical and mortise locks	605 Bright Brass	LBM Latchbolt Monitor
	606 Satin Brass	LBSM Latchbolt Strike Monitor
	612 Satin Bronze	
	613 Bronze Toned	
	629 Bright Stainless Steel	
	630 Satin Stainless Steel	

HES 5000C, 5200C Complete Pacs for Latchbolt Locks

MODEL	DESCRIPTION	630
5000C		\$208
5000C-LBM	Latchbolt monitor	\$286
5200C		\$213
5200C-LBM	Latchbolt monitor	\$292
5200C-LBSM	Latchbolt strike monitor	\$302



HES 5000, 5200 Electric Strike Bodies

MODEL	DESCRIPTION	630
5000		\$184
5000-LBM	Latchbolt monitor	\$262
5200		\$189
5200-LBM	Latchbolt monitor	\$267
5200-LBSM	Latchbolt strike monitor	\$278

Faceplates

MODEL	DESCRIPTION	605	606	612	613	629	630	BLK
501	For use with cylindrical locksets in ANSI metal jambs	\$69	\$51	\$51	\$43	\$69	\$20	\$43
501A	For use with cylindrical locksets or spring latches in aluminum frames. Includes universal mounting tabs.	\$75	\$54	\$54	\$47	\$75	\$25	\$47
502	For use with cylindrical locksets or spring latches in aluminum frames. Includes universal mounting tabs	\$90	\$74	\$74	\$61	\$90	\$44	\$61
503	For use with cylindrical locksets or spring latches in aluminum frames. Includes universal mounting tabs	\$90	\$74	\$74	\$61	\$90	\$44	\$61
504	For use with cylindrical locksets. Four-point mounting for wood installations.	\$90	\$74	\$74	\$61	\$90	\$44	\$61

Accessories

ITEM	DESCRIPTION	PRICE
157	Torx screws	\$14
5000-105	Trim enhancer (goof plate)	\$32
5104-1/2	1/2" stackable lip extension	\$55
5104-1	1" stackable lip extension	\$62
5104-1-1/4	1-1/4" stackable lip extension	\$64
5200 105	Trim enhancer (goof plate)	\$32
5200-500	Filler block	\$58
5204-1/2	1/2" stackable lip extension	\$55
5204-1	1" stackable lip extension	\$62
5204-1-1/4	1-1/4" stackable lip extension	\$64

How to Order Specify quantity and the following information. Order related products separately.

SERIES	MODEL	FINISH	OPTION(S)*
5000, 5200	—	— 630	— LM
5000, 5200 Universal Electric Strike; faceplate option kits ordered separately	C* Complete Electric Strike; includes the 501 and 501A faceplates	605 Bright Brass 606 Satin Brass 612 Satin Bronze 613 Bronze Powder 629 Bright Stainless Steel 630 Satin Stainless Steel BLK Black	LBM Latchbolt Monitor LBSM** Latchbolt Strike Monitor

*Complete Pacs are only available in the 630 finish. **LBSM only available with 5200.

HES 7000C Complete Pacs for Latchbolt Locks

MODEL	DESCRIPTION	630
7000C		\$335
7000C-LBM	Latchbolt monitor	\$457



HES 7000 Electric Strike Bodies

MODEL	DESCRIPTION	630
7000		\$274
7000-LBM	Latchbolt monitor	\$394

Faceplates

MODEL	DESCRIPTION	605	606	612	613E	629	630	BLK
791	Cylindrical lock faceplate	\$113	\$97	\$97	\$83	\$113	\$63	\$83
792	Cylindrical lock faceplate	\$113	\$97	\$97	\$83	\$113	\$63	\$83
783S	Rim exit device faceplate				\$231		\$162	
786S	Rim exit device faceplate				\$262		\$180	
789S	Rim exit device faceplate				\$262		\$180	

Accessories

ITEM	DESCRIPTION	PRICE
157	Torx screws	\$14
7000-104	Lip extension trim adapter (791 & 792 options only)	\$33
7000-105	Trim enhancer (goof plate) (791 & 792 options only)	\$33
7000-106	Keeper pocket adapter (783S & 789S options only)	\$32
7000-107	Full keeper shim pack	\$18
7000-108	Spacer plate (783S & 789S options, black finish only)	\$35
7000-110	Replacement strike plate (701 option only)	\$110
SMB	Surface mounting box	\$224

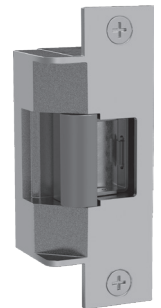
How to Order *Specify quantity and the following information. Order related products separately.*

SERIES	MODEL	FINISH*	OPTION(S)
7000	—	— 630	— LBM
		791 and 792 Options	783S, 786S, 789S Options
7000 Universal Electric Strike; faceplates ordered separately	C* Complete Electric Strike; includes the 791 and 792 faceplates (blank) Strike Body Only	605 Bright Brass 606 Satin Brass 612 Satin Bronze 613E Dark Oxidized Satin Bronze Powder 629 Bright Stainless Steel 630 Satin Stainless Steel BLK Black	613E Dark Oxidized Satin Bronze Powder 630 Satin Stainless Steel LBM Latchbolt Monitor

*Complete Pacs are only available in 630 finish.

HES 7501 Complete Electric Strike Kits

MODEL	DESCRIPTION	605	606	612	613	629	630
7501		\$738	\$723	\$723	\$707	\$738	\$646
7501-LBM	Latchbolt monitor	\$855	\$841	\$841	\$824	\$855	\$763

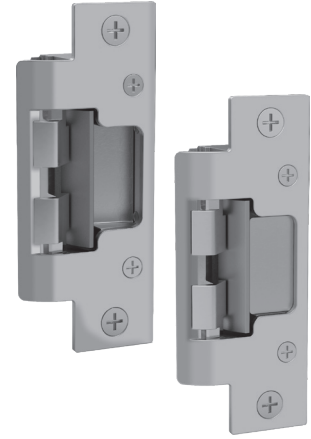


How to Order *Specify quantity and the following information. Order related products separately.*

SERIES	FINISH*	OPTION(S)
7501	— 630	— LBM
7501 Universal Electric Strike; includes faceplate for cylindrical locksets	605 Bright Brass 606 Satin Brass 612 Satin Bronze 613 Bronze Toned 629 Bright Stainless Steel 630 Satin Stainless Steel	LBM Latchbolt Monitor

HES 8000C, 8300C Complete Pac for Latchbolt Locks

MODEL	DESCRIPTION	630
8000C		\$250
8000C-LBM	Latchbolt monitor	\$366
8300C		\$573
8300C-LBM	Latchbolt monitor	\$691



HES 8000, 8300 Electric Strike Bodies

MODEL	DESCRIPTION	630
8000		\$219
8000-LBM	Latchbolt monitor	\$335
8300		\$541
8300-LBM	Latchbolt monitor	\$659

Faceplates

MODEL	DESCRIPTION	605	606	612	613	629	630	BLK
801	For use with: Cylindrical locksets in ANSI metal jamba, with latchbolts up to 5/8" throw	\$81	\$65	\$65	\$53	\$81	\$31	\$53
801A	For use with: Cylindrical locksets with latchbolts up to 5/8" throw. Includes universal mounting tabs. Aluminum frames.	\$86	\$70	\$70	\$58	\$86	\$37	\$58
801E	For use with: Extended lip for 'knock-down' style frame installations. For use with cylindrical latchbolts up to 5/8" throw.	\$81	\$65	\$65	\$53	\$81	\$32	\$53
802	For use with: Cylindrical locksets with latchbolts up to 5/8" throw. Includes universal mounting tabs. Aluminum frames.	\$100	\$83	\$83	\$71	\$100	\$50	\$79
803	For use with: Cylindrical locksets with latchbolts up to 5/8" throw. Includes universal mounting tabs. Aluminum frames.	\$100	\$83	\$83	\$71	\$100	\$50	\$71
805	For use with: Cylindrical locksets. For use with latchbolts up to 5/8" throw Four point mounting for wood installations.	\$100	\$83	\$83	\$71	\$100	\$50	\$71

How to Order Specify quantity and the following information. Order related products separately.

SERIES	MODEL	FINISH*	OPTION(S)
8000	—	– 630	– LBM
8000, 8300 Universal Electric Strike; faceplates ordered separately	C Complete Electric Strike; includes the 801 and 801A faceplates (blank) Strike Body Only	605 Bright Brass 606 Satin Brass 612 Satin Bronze 613 Bronze Toned 629 Bright Stainless Steel 630 Satin Stainless Steel BLK Black	LBM Latchbolt Monitor

*Complete Pacs are only available in 630 finish.

HES 8500 Electric Strike Bodies

MODEL	DESCRIPTION	605	606	612	613	629	630
8500		\$606	\$595	\$595	\$595	\$606	\$541
8500-LBM	Latchbolt monitor	\$724	\$714	\$714	\$714	\$724	\$659
8500-LBSM	Latchbolt strike monitor	\$735	\$724	\$724	\$724	\$735	\$669



Faceplates

MODEL	DESCRIPTION	605	606	612	613	629	630
851M	For use with: Mortise locksets. Compatible locksets: Sargent 8100, 8200, 9200	\$92	\$75	\$75	\$65	\$92	\$42
852K	For use with: Mortise locksets. Compatible locksets: Corbin Russwin ML 2000	\$91	\$74	\$74	\$64	\$91	\$41
852L	For use with: Mortise locksets. Compatible locksets: Schlage L9000	\$92	\$75	\$75	\$65	\$92	\$41
852M	For use with: Mortise locksets. Compatible locksets: Yale 8700 (manufactured after 2005) & 8800, Accurate, Falcon, Kaba Ilco/Unican	\$92	\$75	\$75	\$65	\$92	\$42

How to Order Specify quantity and the following information. Order related products separately.

SERIES	FINISH*	OPTION(S)
8500	– 630	– LBM
8500 Universal Electric Strike; faceplates ordered separately	605 Bright Brass 606 Satin Brass 612 Satin Bronze 613 Bronze Toned 629 Bright Stainless Steel 630 Satin Stainless Steel	LBM Latchbolt Monitor LBSM Latchbolt Strike Monitor

Securitron UNL, MUNL Complete Pacs for Latchbolt Locks

MODEL	613	626
UNL-12	\$584	\$524
UNL-24	\$584	\$522
MUNL-12	\$784	\$730
MUNL-24	\$784	\$730



Accessories

ITEM	DESCRIPTION	PRICE
FSUNL-12	Fail Safe/Fail Secure UnLatch Module, 12 VDC	\$129
FSUNL-24	Fail Safe/Fail Secure UnLatch Module, 24 VDC	\$129

How to Order Specify quantity and the following information. Order related products separately.

SERIES	FAIL SAFE/SECURE	VOLTAGE	FINISH
MUNL	—	– 24	– 10B
UNL Cylindrical	(blank) Fail Secure (Standard)	12 12 Volt	(blank) US26D/626—Stainless Steel
MUNL Mortise	Note: FSUNL for field-selectable fail safe operation ordered separately	24 24 Volt	10B US10B/613—Oil Rubbed Bronze US3 US03/605—Bright Brass

HES 9400, 9500, 9600, 9700, 9800 Surface Mounted Electric Strikes for Rim Exit Devices

MODEL	DESCRIPTION	605	606	612	613	613E	628E	629	630	BSP
9400		\$626	\$613	\$613	\$613	\$572		\$626	\$540	\$572
9400-LBM	Latchbolt monitor	\$736	\$723	\$723	\$723	\$682		\$736	\$650	\$682
9400-LBSM	Latchbolt strike monitor	\$746	\$733	\$733	\$733	\$692		\$746	\$660	\$692
9500		\$726	\$713	\$713	\$713	\$672		\$726	\$640	\$672
9500-LBM	Latchbolt monitor	\$836	\$823	\$823	\$823	\$782		\$836	\$750	\$782
9500-LBSM	Latchbolt strike monitor	\$846	\$833	\$833	\$833	\$792		\$846	\$760	\$792
9600		\$626	\$613	\$613	\$613	\$572		\$626	\$540	\$572
9600-LBM	Latchbolt monitor	\$736	\$723	\$723	\$723	\$682		\$736	\$650	\$682
9600-LBSM	Latchbolt strike monitor	\$746	\$733	\$733	\$733	\$692		\$746	\$660	\$692
9700		\$726	\$713	\$713	\$713	\$672		\$726	\$640	\$672
9700-LBM	Latchbolt monitor	\$836	\$823	\$823	\$823	\$782		\$836	\$750	\$782
9700-LBSM	Latchbolt strike monitor	\$846	\$833	\$833	\$833	\$792		\$846	\$760	\$792
9800		\$726	\$713			\$672	\$672	\$726	\$640	\$672

Accessories

ITEM	DESCRIPTION	PRICE
9000-MTK	Metal template installation kit	\$80
SMB	Surface mounting box	\$224

Spacer Plates/ Brackets

MODEL	DESCRIPTION	613E	628	628E	630	BSP
9000-108	1/8" Spacer plate	\$46		\$46	\$33	\$46
9000-116	1/16" Spacer plate	\$46		\$46	\$33	\$46
9000-ASB	Aluminum spacer bracket	\$109	\$100			\$109

How to Order *Specify quantity and the following information. Order related products separately.*

SERIES	FINISH	OPTION(S)
9600	- 630	- LBM
9400 Surface Mounted Electric Strike for 1/2" Pullman Exit Device; no faceplates required	605 Bright Brass 606 Satin Brass	LBM Latchbolt Monitor LBSM Latchbolt Strike Monitor
9500 Surface Mounted Electric Strike for 3/4" Pullman, fire rated; no faceplates required	612 Satin Bronze 613 Bronze Toned	
9600 Surface Mounted Electric Strike for 3/4" Pullman Rim Exit Devices, non-fire rated; no faceplates required	613E Dark Oxidized Satin Bronze 629 Bright Stainless Steel	
9700 Surface Mounted Electric Strike for Corbin Russwin SecureBolt® and Yale SquareBolt® Rim Exit Devices; no faceplates required	628E* Satin Aluminum Powder 630 Satin Stainless Steel	
9800 Surface Mounted Electric Strike for Adams Rite® Starwheel and Interlocking Rim Exit Devices; no faceplates required	BSP Black Suede Powder	

*Only Available on 9800



HES Folger Adam SB:310-1(1/2) Electric Strike Bodies

ITEM	DESCRIPTION	PRICE
310-1(1/2)-12D		\$577
310-1(1/2)-24D		\$577
310-1(1/2)-F-12D	Fail safe	\$577
310-1(1/2)-F-24D	Fail safe	\$577
310-1(1/2)-12D-LCBMA		\$724
310-1(1/2)-24D-LCBMA		\$724
310-1(1/2)-F-12D-LCBMA	Fail safe	\$724
310-1(1/2)-F-24D-LCBMA	Fail safe	\$724



HES Folger Adam SB:310-1(3/4) Electric Strike Bodies

ITEM	DESCRIPTION	PRICE
310-1(3/4)-12D		\$577
310-1(3/4)-24D		\$577
310-1(3/4)-F-12D	Fail safe	\$577
310-1(3/4)-F-24D	Fail safe	\$577
310-1(3/4)-12D-LCBMA		\$724
310-1(3/4)-24D-LCBMA		\$724
310-1(3/4)-F-12D-LCBMA	Fail safe	\$724
310-1(3/4)-F-24D-LCBMA	Fail safe	\$724

HES Folger Adam SB:310-1(1) Electric Strike Bodies

ITEM	DESCRIPTION	PRICE
310-1(1)-12D		\$577
310-1(1)-24D		\$577
310-1(1)-F-12D	Fail safe	\$577
310-1(1)-F-24D	Fail safe	\$577
310-1(1)-12D-LCBMA		\$724
310-1(1)-24D-LCBMA		\$724
310-1(1)-F-12D-LCBMA	Fail safe	\$724
310-1(1)-F-24D-LCBMA	Fail safe	\$724

HES Folger Adam SB:310-1(PK) Electric Strike Bodies

ITEM	DESCRIPTION	PRICE
310-1(PK)-12D		\$577
310-1(PK)-24D		\$577
310-1(PK)-F-12D	Fail safe	\$577
310-1(PK)-F-24D	Fail safe	\$577
310-1(PK)-12D-LCBMA		\$724
310-1(PK)-24D-LCBMA		\$724
310-1(PK)-F-12D-LCBMA	Fail safe	\$724
310-1(PK)-F-24D-LCBMA	Fail safe	\$724

HES Folger Adam SB:310-1(SK) Electric Strike Bodies

ITEM	DESCRIPTION	PRICE
310-1(SK)-12D		\$600
310-1(SK)-24D		\$600
310-1(SK)-F-12D	Fail safe	\$600
310-1(SK)-F-24D	Fail safe	\$600
310-1(SK)-12D-LCBMA		\$747
310-1(SK)-24D-LCBMA		\$747
310-1(SK)-F-12D-LCBMA	Fail safe	\$747
310-1(SK)-F-24D-LCBMA	Fail safe	\$747

How to Order Specify quantity and the following information. Order related products separately.

PREFIX	SERIES	KEEPER STYLE	FAIL SAFE/SECURE	VOLTAGE	OPTION(S)
SB	310-1	(3/4)	- F	- 24D	- LCBMA
Strike BODY ONLY					
SB Strike Body	310-1 Strike Body Only	(1/2) 1/2" keeper (3/4) 3/4" keeper (1) 1" keeper (PK) For use with 3/4" Pullman style latchbolts (SK) For use with Squarebolt® style rim exit devices	(blank) Fail Secure (Standard) F Fail Safe	12D 12 Volt 24D 24 Volt	LCBMA Latchbolt & locking cam monitor with auxiliary switch

HES Folger Adam 310-2 Complete Pacs for Latchbolt Locks

MODEL	DESCRIPTION	605	606	612	613	629	630
310-2-12D		\$856	\$822	\$822	\$776	\$856	\$736
310-2-24D		\$856	\$822	\$822	\$776	\$856	\$736
310-2-F-12D	Fail safe	\$856	\$822	\$822	\$776	\$856	\$736
310-2-F-24D	Fail safe	\$856	\$822	\$822	\$776	\$856	\$736
310-2-12D-LCBMA		\$1003	\$968	\$968	\$931	\$1003	\$882
310-2-24D-LCBMA		\$1003	\$968	\$968	\$931	\$1003	\$882
310-2-F-12D-LCBMA	Fail safe	\$1003	\$968	\$968	\$931	\$1003	\$882
310-2-F-24D-LCBMA	Fail safe	\$1003	\$968	\$968	\$931	\$1003	\$882



Faceplates

MODEL	605	606	612	613	629	630
FP-310-2	\$270	\$235	\$235	\$199	\$270	\$159

HES Folger Adam 310-2 3/4 Complete Pacs for Latchbolt Locks

MODEL	DESCRIPTION	605	606	612	613	629	630
310-2 3/4-12D		\$948	\$916	\$916	\$880	\$946	\$840
310-2 3/4-24D		\$948	\$916	\$916	\$880	\$946	\$840
310-2 3/4-F-12D	Fail safe	\$948	\$916	\$916	\$880	\$946	\$840
310-2 3/4-F-24D	Fail safe	\$948	\$916	\$916	\$880	\$946	\$840
310-2 3/4-12D-LCBMA		\$1105	\$1062	\$1062	\$1024	\$1092	\$985
310-2 3/4-24D-LCBMA		\$1105	\$1062	\$1062	\$1024	\$1092	\$985
310-2 3/4-F-12D-LCBMA	Fail safe	\$1105	\$1062	\$1062	\$1024	\$1092	\$985
310-2 3/4-F-24D-LCBMA	Fail safe	\$1105	\$1062	\$1062	\$1024	\$1092	\$985

Faceplates

MODEL	605	606	612	613	629	630
FP-310-2-34	\$370	\$339	\$339	\$302	\$368	\$262

HES Folger Adam 310-2 3/4OB Complete Pacs for Latchbolt Locks

MODEL	DESCRIPTION	605	606	612	613	629	630
310-2 3/4OB-12D		\$1160	\$1127	\$1127	\$1093	\$1160	\$1039
310-2 3/4OB-24D		\$1160	\$1127	\$1127	\$1093	\$1160	\$1039
310-2 3/4OB-F-12D	Fail safe	\$1160	\$1127	\$1127	\$1093	\$1160	\$1039
310-2 3/4OB-F-24D	Fail safe	\$1160	\$1127	\$1127	\$1093	\$1160	\$1039

Faceplates

MODEL	605	606	612	613	629	630
FP-310-2-34OB	\$570	\$539	\$544	\$504	\$570	\$460

HES Folger Adam 310-3-1 Complete Pacs for Latchbolt Locks & Deadbolts

MODEL	DESCRIPTION	605	606	612	613	629	630
310-3-1-12D		\$1111	\$1094	\$1094	\$1057	\$1111	\$1052
310-3-1-24D		\$1111	\$1094	\$1094	\$1057	\$1111	\$1052
310-3-1-F-12D	Fail safe	\$1111	\$1094	\$1094	\$1057	\$1111	\$1052
310-3-1-F-24D	Fail safe	\$1111	\$1094	\$1094	\$1057	\$1111	\$1052
310-3-1-12D-LCBMA		\$1267	\$1240	\$1240	\$1204	\$1267	\$1198
310-3-1-24D-LCBMA		\$1267	\$1240	\$1240	\$1204	\$1267	\$1198
310-3-1-F-12D-LCBMA	Fail safe	\$1267	\$1240	\$1240	\$1204	\$1267	\$1198
310-3-1-F-24D-LCBMA	Fail safe	\$1267	\$1240	\$1240	\$1204	\$1267	\$1198

Faceplates

MODEL	605	606	612	613	629	630
FP-310-3-1	\$532	\$505	\$505	\$470	\$532	\$475

How to Order Specify quantity and the following information. Order related products separately.

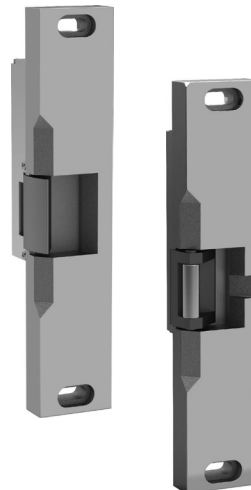
SERIES	FAIL SAFE/SECURE	VOLTAGE	FINISH	OPTION(S)
310-2	- F	- 24D	- 613	- LCBMA
COMPLETE PACS				
310-2 1/2" keeper standard; for up to a 5/8" throw latchbolt	(blank) Fail Secure (Standard)	12D 12 Volt 24D 24 Volt	605 Bright Brass 606 Satin Brass 612 Satin Bronze 613 Bronze Toned 629 Bright Stainless Steel 630 Satin Stainless Steel	LCBMA* Latchbolt & locking cam monitor with auxiliary switch
310-2 3/4 3/4" keeper standard; for up to a 3/4" throw latchbolt without deadbolt	F Fail Safe			
310-2 3/4OB* 3/4" keeper standard; for a pair of doors without a door coordinator				
310-3-1 1" keeper standard; for up to a 3/4" throw latchbolt and a 1" deadbolt				

*LCBMA not available with 310-2 3/4OB.

How to Order

PREFIX	SERIES	FINISH
FP	- 310-2 3/4OB	- 630
FACEPLATE ONLY		
FP Faceplate	310-2 1/2" keeper standard; for up to a 5/8" throw latchbolt 310-2 3/4 3/4" keeper standard; for up to a 3/4" throw latchbolt without deadbolt 310-2 3/4OB 3/4" keeper standard; for a pair of doors without a door coordinator 310-3-1 1" keeper standard; for up to a 3/4" throw latchbolt and a 1" deadbolt	605 Bright Brass 606 Satin Brass 612 Satin Bronze 613 Bronze Toned 629 Bright Stainless Steel 630 Satin Stainless Steel

HES Folger Adam 310-4(S) Complete Pacs for Squarebolt® Rim Exit Device



MODEL	DESCRIPTION	605	606	612	613	629	630
310-4(S)-12D		\$928	\$895	\$895	\$858	\$928	\$817
310-4(S)-24D		\$928	\$895	\$895	\$858	\$928	\$817
310-4(S)-F-12D	Fail safe	\$928	\$895	\$895	\$858	\$928	\$817
310-4(S)-F-24D	Fail safe	\$928	\$895	\$895	\$858	\$928	\$817
310-4(S)-12D-LCBMA		\$1083	\$1051	\$1051	\$1012	\$1083	\$962
310-4(S)-24D-LCBMA		\$1083	\$1051	\$1051	\$1012	\$1083	\$962
310-4(S)-F-12D-LCBMA	Fail safe	\$1083	\$1051	\$1051	\$1012	\$1083	\$962
310-4(S)-F-24D-LCBMA	Fail safe	\$1083	\$1051	\$1051	\$1012	\$1083	\$962

Faceplates

MODEL	605	606	612	613	629	630
FP-310-4-SK	\$334	\$305	\$305	\$267	\$337	\$224

HES Folger Adam 310-4 Complete Pacs for Pullman Rim Exit Devices

MODEL	DESCRIPTION	605	606	612	613	629	630
310-4-12D		\$884	\$851	\$851	\$812	\$884	\$770
310-4-24D		\$884	\$851	\$851	\$812	\$884	\$770
310-4-F-12D	Fail safe	\$884	\$851	\$851	\$812	\$884	\$770
310-4-F-24D	Fail safe	\$884	\$851	\$851	\$812	\$884	\$770
310-4-12D-LCBMA		\$1038	\$996	\$996	\$957	\$1038	\$914
310-4-24D-LCBMA		\$1038	\$996	\$996	\$957	\$1038	\$914
310-4-F-12D-LCBMA	Fail safe	\$1038	\$996	\$996	\$957	\$1038	\$914
310-4-F-24D-LCBMA	Fail safe	\$1038	\$996	\$996	\$957	\$1038	\$914

Faceplates

MODEL	605	606	612	613	629	630
FP-310-4	\$306	\$274	\$274	\$233	\$306	\$191

How to Order Specify quantity and the following information. Order related products separately.

SERIES	FAIL SAFE/SECURE	VOLTAGE	FINISH	OPTION(S)
310-4 (S)	- F	- 12D	- 605	- LCBMA
COMPLETE PACS				
310-4 PK keeper standard; for use with 3/4" Pullman style latchbolts	(blank) Fail Secure (Standard) F Fail Safe	12D 12 Volt 24D 24 Volt	605 Bright Brass 606 Satin Brass 612 Satin Bronze 613 Bronze Toned 629 Bright Stainless Steel 630 Satin Stainless Steel	LCBMA* Latchbolt & locking cam monitor with auxiliary switch
310-4(S) SK keeper standard; for use with Squarebolt® style rim exit devices				

How to Order Specify quantity and the following information. Order related products separately.

PREFIX	SERIES	KEEPER STYLE	FINISH
FP	- 310-4	(SK)	- 630
FACEPIATES ONLY			
FP Faceplate	310-4 PK keeper standard; for use with 3/4" Pullman style latchbolts 310-4(S) SK keeper standard; for use with Squarebolt® style rim exit devices	(SK) For use with Squarebolt® style rim exit devices	605 Bright Brass 606 Satin Brass 612 Satin Bronze 613 Bronze Toned 629 Bright Stainless Steel 630 Satin Stainless Steel

HES Folger Adam 310-4-1 Complete Pacs for Surface Vertical Rods

MODEL	DESCRIPTION	605	606	612	613	629	630
310-4-1-12D		\$1500	\$1463	\$1463	\$1440	\$1500	\$1440
310-4-1-24D		\$1500	\$1463	\$1463	\$1440	\$1500	\$1440
310-4-1-F-12D	Fail safe	\$1500	\$1463	\$1463	\$1440	\$1500	\$1440
310-4-1-F-24D	Fail safe	\$1500	\$1463	\$1463	\$1440	\$1500	\$1440
310-4-1-12D-LCBMA		\$1763	\$1723	\$1723	\$1716	\$1763	\$1699
310-4-1-24D-LCBMA		\$1763	\$1723	\$1723	\$1716	\$1763	\$1699
310-4-1-F-12D-LCBMA	Fail safe	\$1763	\$1723	\$1723	\$1716	\$1763	\$1699
310-4-1-F-24D-LCBMA	Fail safe	\$1763	\$1723	\$1723	\$1716	\$1763	\$1699



INSTALLATION NOTE: Double-door models are available with four different center-to-center dimensions between latchbolt keepers. Keepers are wide enough to compensate for vertical rod exit bolts, which may be as much as 3/8" (10 mm) off center-to-center dimension, either way. When using an electric strike in conjunction with a vertical rod exit device, it is necessary that:

1. The bottom rod of the exit device be removed or made inoperative
2. The latchbolt of the exit device be the "Pullman" or beveled type
3. The latchbolt be free-latching and remain projected while the door is open. Mechanisms that hold the latchbolt retracted while the door is open, and automatically release it when the door is closed, must be removed or made inoperative.

Faceplates

MODEL	605	606	612	613	629	630
FP-310-4-1	\$445	\$406	\$406	\$398	\$445	\$398

HES Folger Adam 310-4-2 Complete Pacs for Surface Vertical Rods

MODEL	DESCRIPTION	605	606	612	613	629	630
310-4-2-12D		\$1500	\$1463	\$1463	\$1440	\$1500	\$1440
310-4-2-24D		\$1500	\$1463	\$1463	\$1440	\$1500	\$1440
310-4-2-F-12D	Fail safe	\$1500	\$1463	\$1463	\$1440	\$1500	\$1440
310-4-2-F-24D	Fail safe	\$1500	\$1463	\$1463	\$1440	\$1500	\$1440
310-4-2-12D-LCBMA		\$1763	\$1723	\$1723	\$1716	\$1763	\$1699
310-4-2-24D-LCBMA		\$1763	\$1723	\$1723	\$1716	\$1763	\$1699
310-4-2-F-12D-LCBMA	Fail safe	\$1763	\$1723	\$1723	\$1716	\$1763	\$1699
310-4-2-F-24D-LCBMA	Fail safe	\$1763	\$1723	\$1723	\$1716	\$1763	\$1699

Faceplates

MODEL	605	606	612	613	629	630
FP-310-4-2	\$445	\$406	\$406	\$398	\$445	\$398

HES Folger Adam 310-4-3 Complete Pacs for Surface Vertical Rods

MODEL	DESCRIPTION	605	606	612	613	629	630
310-4-3-12D		\$1572	\$1535	\$1535	\$1523	\$1572	\$1508
310-4-3-24D		\$1572	\$1535	\$1535	\$1523	\$1572	\$1508
310-4-3-F-12D	Fail safe	\$1572	\$1535	\$1535	\$1523	\$1572	\$1508
310-4-3-F-24D	Fail safe	\$1572	\$1535	\$1535	\$1523	\$1572	\$1508
310-4-3-12D-LCBMA		\$1832	\$1796	\$1796	\$1784	\$1832	\$1767
310-4-3-24D-LCBMA		\$1832	\$1796	\$1796	\$1784	\$1832	\$1767
310-4-3-F-12D-LCBMA	Fail safe	\$1832	\$1796	\$1796	\$1784	\$1832	\$1767
310-4-3-F-24D-LCBMA	Fail safe	\$1832	\$1796	\$1796	\$1784	\$1832	\$1767

Faceplates

MODEL	605	606	612	613	630
FP-310-4-3	\$514	\$482	\$477	\$466	\$466

HES Folger Adam 310-4-30 Complete Pacs for Surface Vertical Rods

MODEL	DESCRIPTION	605	606	612	613	629	630
310-4-30-12D		\$1572	\$1535	\$1535	\$1523	\$1572	\$1508
310-4-30-24D		\$1572	\$1535	\$1535	\$1523	\$1572	\$1508
310-4-30-F-12D	Fail safe	\$1572	\$1535	\$1535	\$1523	\$1572	\$1508
310-4-30-F-24D	Fail safe	\$1572	\$1535	\$1535	\$1523	\$1572	\$1508
310-4-30-12D-LCBMA		\$1832	\$1796	\$1796	\$1784	\$1832	\$1767
310-4-30-24D-LCBMA		\$1832	\$1796	\$1796	\$1784	\$1832	\$1767
310-4-30-F-12D-LCBMA	Fail safe	\$1832	\$1796	\$1796	\$1784	\$1832	\$1767
310-4-30-F-24D-LCBMA	Fail safe	\$1832	\$1796	\$1796	\$1784	\$1832	\$1767

Faceplates

MODEL	605	606	612	613	630
FP-310-4-30	\$514	\$477	\$477	\$466	\$466

How to Orders on next page

How to Order *Specify quantity and the following information. Order related products separately.*

SERIES	KEEPER STYLE	FAIL SAFE/SECURE	VOLTAGE	FINISH	OPTION(S)
310-4-X	(PK)	F	- 24D	- 612	- LCBMA
COMPLETE PACS					
1 For use with vertical rod spacing between 4" and 4-3/4"	(PK) For use with 3/4" Pullman style latchbolts	(blank) Fail Secure (Standard)	12D 12 Volt	605 Bright Brass	LCBMA Latchbolt & locking cam monitor with auxiliary switch
2 For use with vertical rod spacing between 4-5/8" and 5-3/8"			24D 24 Volt	606 Satin Brass	
3 For use with vertical rod spacing between 5-1/4" and 6"		F Fail Safe	612 Satin Bronze		
30 For use with vertical rod spacing between 2-5/8" and 3-3/8"			613 Bronze Toned		
			629 Bright Stainless Steel		
				630 Satin Stainless Steel	

How to Order *Specify quantity and the following information. Order related products separately.*

PREFIX	SERIES	KEEPER STYLE	FINISH
FP	- 310-4-X	(PK)	- 630
FACEPLATE ONLY			
FP Faceplate	1 For use with vertical rod spacing between 4" and 4-3/4" 2 For use with vertical rod spacing between 4-5/8" and 5-3/8" 30 For use with vertical rod spacing between 2-5/8" and 3-3/8"	(PK) For use with 3/4" Pullman style latchbolts	605 Bright Brass 606 Satin Brass 612 Satin Bronze 613 Bronze Toned 629 Bright Stainless Steel 630 Satin Stainless Steel

HES Folger Adam 310-6-1 Complete Pacs for Concealed Vertical Rods

MODEL	DESCRIPTION	612	627
310-6-1-12D		\$1692	\$1452
310-6-1-24D		\$1692	\$1452
310-6-1-F-12D	Fail safe	\$1692	\$1452
310-6-1-F-24	Fail safe	\$1692	\$1452
310-6-1-12D-LCBMA		\$1950	\$1726
310-6-1-24D-LCBMA		\$1950	\$1726
310-6-1-F-12D-LCBMA	Fail safe	\$1950	\$1726
310-6-1-F-24D-LCBMA	Fail safe	\$1950	\$1726



Faceplates

MODEL	612	627
FP-310-6-1	\$649	\$409

HES Folger Adam 310-6-2 Complete Pacs for Concealed Vertical Rods

MODEL	DESCRIPTION	612	627
310-6-2-12D		\$1692	\$1452
310-6-2-24D		\$1692	\$1452
310-6-2-F-12D	Fail safe	\$1692	\$1452
310-6-2-F-24D	Fail safe	\$1692	\$1452
310-6-2-12D-LCBMA		\$1950	\$1726
310-6-2-24D-LCBMA		\$1950	\$1726
310-6-2-F-12D-LCBMA	Fail safe	\$1950	\$1726
310-6-2-F-24D-LCBMA	Fail safe	\$1950	\$1726

Faceplates

MODEL	612	627
FP-310-6-2	\$649	\$409

HES Folger Adam 310-6-3 Complete Pacs for Concealed Vertical Rods

MODEL	612	627
310-6-3-12D	\$1692	\$1452
310-6-3-24D	\$1692	\$1452
310-6-3-F-12D	\$1692	\$1452
310-6-3-F-24D	\$1692	\$1452
310-6-3-12D-LCBMA	\$1950	\$1726
310-6-3-24D-LCBMA	\$1950	\$1726
310-6-3-F-12D-LCBMA	\$1950	\$1726
310-6-3-F-24D-LCBMA	\$1950	\$1726

Faceplates

MODEL	612	627
FP-310-6-3	\$649	\$409

HES Folger Adam 310-6-8 Complete Pacs for Concealed Vertical Rods

MODEL	DESCRIPTION	612	627
310-6-8-12D		\$1692	\$1452
310-6-8-24D		\$1692	\$1452
310-6-8-F-12D	Fail safe	\$1692	\$1452
310-6-8-F-24D	Fail safe	\$1692	\$1452
310-6-8-12D-LCBMA		\$1950	\$1726
310-6-8-24D-LCBMA		\$1950	\$1726
310-6-8-F-12D-LCBMA	Fail safe	\$1950	\$1726
310-6-8-F-24D-LCBMA	Fail safe	\$1950	\$1726

Faceplates

MODEL	612	627
FP-310-6-8	\$649	\$409

HES Folger Adam 310-6-30 Complete Pacs for Concealed Vertical Rods

MODEL	DESCRIPTION	612	627
310-6-30-12D		\$1692	\$1452
310-6-30-24D		\$1692	\$1452
310-6-30-F-12D	Fail safe	\$1692	\$1452
310-6-30-F-24D	Fail safe	\$1692	\$1452
310-6-30-12D-LCBMA		\$1950	\$1726
310-6-30-24D-LCBMA		\$1950	\$1726
310-6-30-F-12D-LCBMA	Fail safe	\$1950	\$1726
310-6-30-F-24D-LCBMA	Fail safe	\$1950	\$1726

Faceplates

MODEL	612	627
FP-310-6-30	\$649	\$409

INSTALLATION NOTE: Double-door models are available with four different center-to-center dimensions between latchbolt keepers. Keepers are wide enough to compensate for vertical rod exit bolts, which may be as much as 3/8" (10 mm) off center-to-center dimension, either way. When using an electric strike in conjunction with a vertical rod exit device, it is necessary that:

1. The bottom rod of the exit device be removed or made inoperative
2. The latchbolt of the exit device be the "Pullman" or beveled type
3. The latchbolt be free-latching and remain projected while the door is open. Mechanisms that hold the latchbolt retracted while the door is open, and automatically release it when the door is closed, must be removed or made inoperative.

How to Order *Specify quantity and the following information. Order related products separately.*

SERIES	KEEPER STYLE	FAIL SAFE/SECURE	VOLTAGE	FINISH	OPTION(S)
310-6-X	(PK)	- F	- 24D	- 627	- LCBMA
COMPLETE PACS					
1 For use with vertical rod spacing between 4" and 4-3/4"	(PK) For use with 3/4" Pullman style latchbolts	(blank) Fail Secure (Standard)	12D 12 Volt	612 Satin Bronze	LCBMA Latchbolt & locking cam monitor with auxiliary switch
2 For use with vertical rod spacing between 4-5/8" and 5-3/8"		F Fail Safe	24D 24 Volt	627 Satin Aluminum	
3 For use with vertical rod spacing between 5-1/4" and 6"					
8 For only the active leaf of a pair of doors					
30 For use with vertical rod spacing between 2-5/8" and 3-3/8"					

How to Order *Specify quantity and the following information. Order related products separately.*

PREFIX	SERIES	KEEPER STYLE	FINISH
FP	- 310-6-X	(PK)	- 612
FACEPLATE ONLY			
FP Faceplate	1 For use with vertical rod spacing between 4" and 4-3/4"	(PK) For use with 3/4" Pullman style latchbolts	612 Satin Bronze
	2 For use with vertical rod spacing between 4-5/8" and 5-3/8"		627 Satin Aluminum
	3 For use with vertical rod spacing between 5-1/4" and 6"		
	8 For only the active leaf of a pair of doors		
	30 For use with vertical rod spacing between 2-5/8" and 3-3/8"		

HES Folger Adam 310-1-1 Electric Strike Bodies

MODEL	DESCRIPTION	630
310-1-1-12D		\$970
310-1-1-24D		\$970
310-1-1-F-12D	Fail safe	\$970
310-1-1-F-24D	Fail safe	\$970
310-1-1-12D-LCBMA		\$1250
310-1-1-24D-LCBMA		\$1250
310-1-1-F-12D-LCBMA	Fail safe	\$1250
310-1-1-F-24D-LCBMA	Fail safe	\$1250



HES Folger Adam 310-1-2 Electric Strike Bodies

MODEL	DESCRIPTION	630
310-1-2-12D		\$970
310-1-2-24D		\$970
310-1-2-F-12D	Fail safe	\$970
310-1-2-F-24D	Fail safe	\$970
310-1-2-12D-LCBMA		\$1250
310-1-2-24D-LCBMA		\$1250
310-1-2-F-12D-LCBMA	Fail safe	\$1250
310-1-2-F-24D-LCBMA	Fail safe	\$1250

HES Folger Adam 310-1-3 Electric Strike Bodies

MODEL	DESCRIPTION	630
310-1-3-12D		\$970
310-1-3-24D		\$970
310-1-3-F-12D	Fail safe	\$970
310-1-3-F-24D	Fail safe	\$970
310-1-3-12D-LCBMA		\$1250
310-1-3-24D-LCBMA		\$1250
310-1-3-F-12D-LCBMA	Fail safe	\$1250
310-1-3-F-24D-LCBMA	Fail safe	\$1250

HES Folger Adam 310-1-30 Electric Strike Bodies

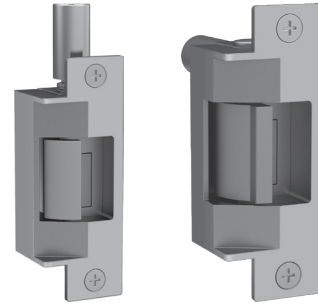
MODEL	DESCRIPTION	630
310-1-30-12D		\$970
310-1-30-24D		\$970
310-1-30-F-12D	Fail safe	\$970
310-1-30-F-24D	Fail safe	\$970
310-1-30-12D-LCBMA		\$1250
310-1-30-24D-LCBMA		\$1250
310-1-30-F-24D-LCBMA	Fail safe	\$1250
310-1-30-F-12D-LCBMA	Fail safe	\$1250

How to Order Specify quantity and the following information. Order related products separately.

PREFIX	SERIES	X - MODEL	KEEPER STYLE	FAIL SAFE/SECURE	VOLTAGE	OPTION(S)
SB	- 310-1	- 1	(PK)	- F	- 24D	- LCBMA
STRIKE BODY ONLY						
SB Strike Body	310-1 Strike Body Only	1 For use with vertical rod spacing between 4" and 4-3/4" 2 For use with vertical rod spacing between 4-5/8" and 5-3/8" 3 For use with vertical rod spacing between 5-1/4" and 6" 30 For use with vertical rod spacing between 2-5/8" and 3-3/8"	(PK) For use with Pullman style latchbolts	(blank) Fail Secure (Standard) F Fail Safe	12D 12 Volt 24D 24 Volt	LCBMA Latchbolt & locking cam monitor with auxiliary switch

HES Folger Adam 712 Complete Pacs for Latchbolt Locks

MODEL	DESCRIPTION	605	606	612	613	629	630
712-12D		\$810	\$778	\$778	\$737	\$778	\$695
712-24D		\$810	\$778	\$778	\$737	\$778	\$695
712-F-12D	Fail safe	\$810	\$778	\$778	\$737	\$778	\$695
712-F-24D	Fail safe	\$810	\$778	\$778	\$737	\$778	\$695
712-12D-LBMLCM		\$958	\$926	\$926	\$884	\$926	\$843
712-24D-LBMLCM		\$958	\$926	\$926	\$884	\$926	\$843
712-F-12D-LBMLCM	Fail safe	\$958	\$926	\$926	\$884	\$926	\$843
712-F-24D-LBMLCM	Fail safe	\$958	\$926	\$926	\$884	\$926	\$843



HES Folger Adam 712-75 Complete Pacs for Latchbolt Locks

MODEL	DESCRIPTION	605	606	612	613	629	630
712-75-12D		\$839	\$803	\$803	\$768	\$803	\$723
712-75-24D		\$839	\$803	\$803	\$768	\$803	\$723
712-75-F-12D	Fail safe	\$839	\$803	\$803	\$768	\$803	\$723
712-75-F-24D	Fail safe	\$839	\$803	\$803	\$768	\$803	\$723
712-75-12D-LBMLCM		\$986	\$950	\$950	\$915	\$950	\$872
712-75-24D-LBMLCM		\$986	\$950	\$950	\$915	\$950	\$872
712-75-F-12D-LBMLCM	Fail safe	\$986	\$950	\$950	\$915	\$950	\$872
712-75-F-24D-LBMLCM	Fail safe	\$986	\$950	\$950	\$915	\$950	\$872

700 & 742 Series | LBMLCM: When using LBMLCM with a SARGENT 78/8200 Series or BEST 40 Series Mortise Lock, a 1/2" or 5/8" keeper latchbolt detection will be dependent on the door gap in order to ensure functionality. Consult customer support regarding use with other manufacturers.

712-75, 732-75 and 742-75: The LBMLCM option is compatible with SARGENT 78/8200 Series or BEST 40 Series 3/4" throw mortise lock latchbolts in hollow metal and wood frame applications. Monitoring capabilities are dependent on a maximum 1/8" door gap in order to ensure functionality. Consult customer support regarding use with other manufacturers.

HES Folger Adam 732 Complete Pacs for Latchbolt Locks

MODEL	DESCRIPTION	605	606	612	613	629	630
732-12D		\$810	\$778	\$778	\$737	\$778	\$695
732-24D		\$810	\$778	\$778	\$737	\$778	\$695
732-F-12D	Fail safe	\$810	\$778	\$778	\$737	\$778	\$695
732-F-24D	Fail safe	\$810	\$778	\$778	\$737	\$778	\$695
732-12D-LBMLCM		\$958	\$926	\$926	\$884	\$926	\$843
732-24D-LBMLCM		\$958	\$926	\$926	\$884	\$926	\$843
732-F-12D-LBMLCM	Fail safe	\$958	\$926	\$926	\$884	\$926	\$843
732-F-24D-LBMLCM	Fail safe	\$958	\$926	\$926	\$884	\$926	\$843

HES Folger Adam 732-75 Complete Pacs for Latchbolt Locks

MODEL	DESCRIPTION	605	606	612	613	629	630
732-75-12D		\$839	\$803	\$803	\$768	\$803	\$723
732-75-24D		\$839	\$803	\$803	\$768	\$803	\$723
732-75-F-12D	Fail safe	\$839	\$803	\$803	\$768	\$803	\$723
732-75-F-24D	Fail safe	\$839	\$803	\$803	\$768	\$803	\$723
732-75-12D-LBMLCM		\$986	\$950	\$950	\$915	\$950	\$872
732-75-24D-LBMLCM		\$986	\$950	\$950	\$915	\$950	\$872
732-75-F-12D-LBMLCM	Fail safe	\$986	\$950	\$950	\$915	\$950	\$872
732-75-F-24D-LBMLCM	Fail safe	\$986	\$950	\$950	\$915	\$950	\$872

Faceplates

MODEL	605	606	612	613	629	630
FP-712	\$264	\$233	\$233	\$192	\$233	\$150
FP-712-75	\$293	\$257	\$257	\$223	\$257	\$177

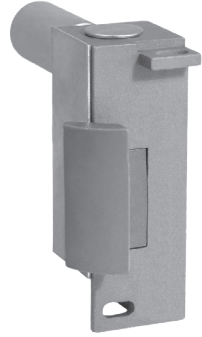
How to Order Complete Pacs *Specify quantity and the following information. Order related products separately.*

SERIES	FAIL SAFE/SECURE	VOLTAGE	FINISH	OPTION(S)
712	- F	- 24D	- 630	- LBMLCM
712 1/2" PK keeper standard; Hollow metal frames, for up to a 5/8" throw latchbolt	(blank)	12D 12 Volt	605 Bright Brass	LBMLCM
712-75 3/4" PK keeper standard; Hollow metal frames, for up to a 3/4" throw latchbolt without deadbolt	Fail Secure (Standard)	24D 24 Volt	606 Satin Brass	Latchbolt & locking cam monitor
732 1/2" PK keeper standard; Wood frames, for up to a 5/8" throw latchbolt	F Fail Safe		612 Satin Bronze	
732-75 3/4" PK keeper standard; Wood frames, for up to a 3/4" throw latchbolt without deadbolt			613 Bronze Toned	
			629 Bright Stainless Steel	
			630 Satin Stainless Steel	

How to Order Faceplate Only

PREFIX	SERIES	FINISH
FP	- 732-75	- 613
FP Faceplate	712 1/2" PK keeper standard; Hollow metal frames, for up to a 5/8" throw latchbolt	605 Bright Brass
	712-75 3/4" PK keeper standard; Hollow metal frames, for up to a 3/4" throw latchbolt without deadbolt	606 Satin Brass
	732 PK keeper standard; Wood frames, for up to a 5/8" throw latchbolt	612 Satin Bronze
	732-75 3/4" PK keeper standard; Wood frames, for up to a 3/4" throw latchbolt without deadbolt	613 Bronze Toned
		629 Bright Stainless Steel
		630 Satin Stainless Steel

HES Folger Adam SB710 Electric Strike Bodies



MODEL	DESCRIPTION	630
710-12D		\$546
710-24D		\$546
710-F-12D	Fail safe	\$546
710-F-24D	Fail safe	\$546
710-12D-LBMLCM		\$693
710-24D-LBMLCM		\$693
710-F-12D-LBMLCM	Fail safe	\$693
710-F-24D-LBMLCM	Fail safe	\$693

HES Folger Adam SB710-75 Electric Strike Bodies

MODEL	DESCRIPTION	630
710-75-12D		\$546
710-75-24D		\$546
710-75-F-12D	Fail safe	\$546
710-75-F-24D	Fail safe	\$546
710-75-12D-LBMLCM		\$693
710-75-24D-LBMLCM		\$693
710-75-F-12D-LBMLCM	Fail safe	\$693
710-75-F-24D-LBMLCM	Fail safe	\$693

HES Folger Adam 730 Electric Strike Bodies

MODEL	DESCRIPTION	630
730-12D		\$546
730-24D		\$546
730-F-12D	Fail safe	\$546
730-F-24D	Fail safe	\$546
730-12D-LBMLCM		\$693
730-24D-LBMLCM		\$693
730-F-12D-LBMLCM	Fail safe	\$693
730-F-24D-LBMLCM	Fail safe	\$693

HES Folger Adam 730-75 Electric Strike Bodies

MODEL	DESCRIPTION	630
730-75-12D		\$546
730-75-24D		\$546
730-75-F-12D	Fail safe	\$546
730-75-F-24D	Fail safe	\$546
730-75-12D-LBMLCM		\$693
730-75-24D-LBMLCM		\$693
730-75-F-12D-LBMLCM	Fail safe	\$693
730-75-F-24D-LBMLCM	Fail safe	\$693

How to Order *Specify quantity and the following information. Order related products separately.*

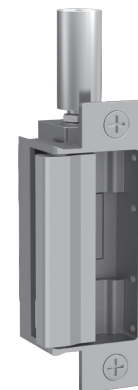
PREFIX	STRIKE SERIES	KEEPER STYLE	FAIL SAFE/SECURE	VOLTAGE	OPTION(S)
SB	- 710	(3/4)	- F	- 24D	-LCBMA
Strike BODY ONLY					
SB Strike Body	710 Hollow metal frames, for up to a 5/8" throw latchbolt 710-75 Hollow metal frames, for up to a 3/4" throw latchbolt without deadbolt 730 Wood frames, for up to a 5/8" throw latchbolt 730-75 Wood frames, for up to a 3/4" throw latchbolt without deadbolt	1/2 1/2" Keeper 3/4 3/4" Keeper	(blank) Fail Secure (Standard) F Fail Safe	12D 12 Volt 24D 24 Volt	LBMLCM Latchbolt & locking cam monitor

INSTALLATION NOTE: Double-door models are available with four different center-to-center dimensions between latchbolt keepers. Keepers are wide enough to compensate for vertical rod exit bolts, which may be as much as 3/8" (10 mm) off center-to-center dimension, either way. When using an electric strike in conjunction with a vertical rod exit device, it is necessary that:

1. The bottom rod of the exit device be removed or made inoperative.
2. The latchbolt of the exit device be the "Pullman" or beveled type.
3. The latchbolt be free-latching and remain projected while the door is open. Mechanisms that hold the latchbolt retracted while the door is open, and automatically release it when the door is closed, must be removed or made inoperative.

HES Folger Adam 742-75 Complete Pacs for Latchbolt Locks

MODEL	DESCRIPTION	605	606	612	613	629	630
742-75-12D		\$867	\$833	\$833	\$792	\$833	\$752
742-75-24D		\$867	\$833	\$833	\$792	\$833	\$752
742-75-F-12D	Fail safe	\$867	\$833	\$833	\$792	\$833	\$752
742-75-F-24D	Fail safe	\$867	\$833	\$833	\$792	\$833	\$752
742-75-12D-LBMLCM		\$1014	\$980	\$980	\$939	\$980	\$898
742-75-24D-LBMLCM		\$1014	\$980	\$980	\$939	\$980	\$898
742-75-F-12D-LBMLCM	Fail safe	\$1014	\$980	\$980	\$939	\$980	\$898
742-75-F-24D-LBMLCM	Fail safe	\$1014	\$980	\$980	\$939	\$980	\$898



Faceplates

MODEL	605	606	612	613	629	630
FP-742	\$281	\$246	\$246	\$206	\$246	\$166

How to Order Complete Pacs

Specify quantity and the following information. Order related products separately.

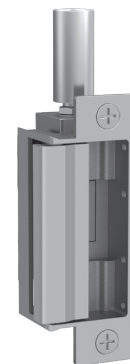
SERIES	FAIL SAFE/SECURE	VOLTAGE	FINISH	OPTION(S)
742-75	- F	- 12D	- 613	- LBMLCM
742-75 Hollow metal frames, for up to a 3/4" throw latchbolt without deadbolt	(blank) Fail Secure (Standard) F Fail Safe	12D 12 Volt 24D 24 Volt	605 Bright Brass 606 Satin Brass 612 Satin Bronze 613 Bronze Toned 629 Bright Stainless Steel 630 Satin Stainless Steel	LBMLCM Latchbolt & locking cam monitor

How to Order Faceplate Only

PREFIX	SERIES	FINISH
FP	- 742-75	- 630
FP Faceplate	742-75 Hollow metal frames, for up to a 3/4" throw latchbolt without deadbolt	605 Bright Brass 606 Satin Brass 612 Satin Bronze 613 Bronze Toned 629 Bright Stainless Steel 630 Satin Stainless Steel

HES Folger Adam SB740-75 Electric Strike Bodies

MODEL	DESCRIPTION	630
740-75-12D		\$586
740-75-24D		\$586
740-75-F-12D	Fail safe	\$586
740-75-F-24D	Fail safe	\$586
740-75-12D-LBMLCM		\$733
740-75-24D-LBMLCM		\$733
740-75-F-12D-LBMLCM	Fail safe	\$733
740-75-F-24D-LBMLCM	Fail safe	\$733



How to Order

Specify quantity and the following information. Order related products separately.

PREFIX	SERIES	KEEPER STYLE	FAIL SAFE/SECURE	VOLTAGE	OPTION(S)
SB	740-75	(3/4)	—	- 24D	—
STRIKE BODY ONLY					
SB Strike Body	740-75	3/4 3/4" Keeper	(blank) Fail Secure (Standard) F Fail Safe	12D 12 Volt 24D 24 Volt	LBMLCM Latchbolt & locking cam monitor

700 & 742 Series | LBMLCM: When using LBMLCM with a SARGENT 78/8200 Series or BEST 40 Series Mortise Lock, a 1/2" or 5/8" keeper latchbolt detection will be dependent on the door gap in order to ensure functionality. Consult customer support regarding use with other manufacturers.

712-75, 732-75 and 742-75: The LBMLCM option is compatible with SARGENT 78/8200 Series or BEST 40 Series 3/4" throw mortise lock latchbolts in hollow metal and wood frame applications. Monitoring capabilities are dependent on a maximum 1/8" door gap in order to ensure functionality. Consult customer support regarding use with other manufacturers.

HES Electric Strike Accessories

ITEM	DESCRIPTION	PRICE
HESCUT-MTK	For installing the 1006, 1500, 1600, 4500, 5000, 5200, 7000, and 7501 electric strikes (4-7/8" ANSI jamb preparations only)	\$78
9000-MTK	Metal template installation kit	\$80
SMB	Surface mounting box	\$224
150	Stainless steel. Installed at the edge of the door to cover the lock and electric strike. Available in 626 finish only	\$91
152	Mount inside hollow metal and aluminum jambs	\$26
157	Torx screws	\$14
157D	Tamper-Resistant Torx R20 insert bit	\$42
310-2-3	Designed to prevent tampering with the latchbolt as well as the latchbolt keeper. Prevents one door from being open before the other	\$219
2001-1	Converts AC to unfiltered DC. Rated 35 V, 2 Amp. Not recommended for 1006 Electric Strike	\$39
2001M	Converts AC to unfiltered DC. Rated 35 V, 1 Amp. Includes MOV and self-resettable fuse. Not recommended for 1006 Electric Strike.	\$68
2004M	Adapter between existing HES electric strikes and ElectroLynx® connectors	\$41
2005M3	In-line power controller able to receive input voltages from 12–32V AC or DC. Built-in bridge rectifier. Reduces initial voltage by 25% to extend the life of the electric strike. Includes built-in resettable fuse, MOV, voltage regulation and input voltage level indicating and unit status. Addition of Smart Pac® III to any Electric Strike extends the 5-year no-fault warranty to a 10-year no-fault warranty. For use with 1006, input voltage must be DC	\$103
2006M	Audible operation indicator at 24VDC, 75db at 11-3/4"	\$51
2007M	With 4" wire leads	\$21

Electromagnetic Locks

Securitron M380E EcoMag® 600 lbs Intelligent Magnalocks®

MODEL	DESCRIPTION	600	605	606	612	613E	628	629	630	BSP
M380EBD	BondSTAT, DPS	\$708	\$771	\$771	\$771	\$708	\$660	\$771	\$771	\$708
M380EBDX	BondSTAT, DPS, REX	\$876	\$925	\$925	\$925	\$876	\$819	\$925	\$925	\$876



How to Order *Specify quantity and the following information. Order related products separately.*

MODEL SERIES	ACCESSORY OPTIONS	FINISH OPTIONS*				
M380EBD	X	- 606				
M380EBD	600 lbs with BondSTAT Monitor & Door Position Switch	(blank) No Accessory Options X PIR Request to Exit	600 Paintable Primer Gray Finish 628/US28 Satin Aluminum Clear 605/US3 Bright Brass 606/US4 Satin Brass 612/US10 Satin Bronze	613E Dark Oxidized Satin Bronze 629 Bright Stainless Steel 630 Satin Stainless Steel BSP Black Suede Powder		

Securitron M680E EcoMag® 1,200 lbs Intelligent Magnalocks®

MODEL	DESCRIPTION	600	605	606	612	613E	628	629	630	BSP
M680E							\$681			
M680EBD	BondSTAT, DPS	\$840	\$854	\$854	\$854	\$801	\$747	\$854	\$854	\$801
M680EBDX	BondSTAT, DPS, REX	\$1112	\$1112	\$1112	\$1112	\$1059	\$1006	\$1112	\$1112	\$1059

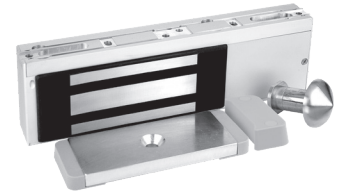


How to Order *Specify quantity and the following information. Order related products separately.*

MODEL SERIES	MONITORING OPTIONS	ACCESSORY OPTIONS	FINISH OPTIONS*				
M680E	BD	X	- 606				
M680E	(1,200 lbs)	(blank) No Monitoring BD BondSTAT Monitor & Door Position Switch	(blank) No Accessory Options X PIR Request to Exit	600 Paintable Primer Gray Finish 628/US28 Satin Aluminum Clear 605/US3 Bright Brass 606/US4 Satin Brass 612/US10 Satin Bronze	613E Dark Oxidized Satin Bronze 629 Bright Stainless Steel 630 Satin Stainless Steel BSP Black Suede Powder		

Securitron iMXDa Delayed Egress

ITEM	DESCRIPTION	PRICE
iMXDa	Dual Voltage, Integrated Initiation	\$1397
iMXDa-CA15S	Dual Voltage, California, 15 sec	\$1397
iMXDa-CA30S	Dual Voltage, California, 30 sec	\$1397
iMXDaCH	Dual Voltage, Chicago	\$1397
iMXDaH	iMXDa for HUGS Infant Protection System	\$1397
iEXDa	Dual Voltage, External Initiation	\$1239



Delayed Egress Magnalock Accessories

ITEM	DESCRIPTION	PRICE
BA-XDT-12	12 VDC Boxed Alarm & Door Label Exit Delay Timer	\$278
BA-XDT-24	24 VDC Boxed Alarm & Door Label Exit Delay Timer	\$278
EXD-1L	Label & Documentation Exit Delay System	\$24
FA-XDT-12	12 VDC, Flush Mount with Alarm & Door Exit Delay Timer	\$278
FA-XDT-24	24 VDC, Flush Mount with Alarm & Door Exit Delay Timer	\$278
XDT-12	12 VDC Exit Delay Timer	\$184
XDT-24	24 VDC Exit Delay Timer	\$184
SB-MXD	Sex Bolt Kit — Door Movement	\$209

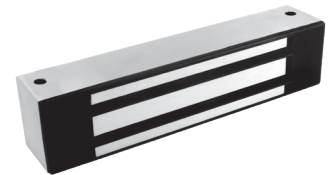
How to Order

Specify quantity and the following information. Order related products separately.

MODEL SERIES	TIMING OPTIONS
iMXDa	CH
iMXDa Integrated Initiation	(blank) Adjustable Timing -CA15S California Required 15s Timings
iEXDa External Initiation	-CA30S California Required 30s Timings CH Chicago Required Timings H HUGS Infant Protection Timings

Securitron M32 600 lbs Durable Magnalocks®

ITEM	DESCRIPTION	PRICE
M32BD	BondSTAT Monitor & Door Position Switch	\$566
M32D	Door Position Switch	\$466
M32	No Monitoring	\$394
M32B	BondSTAT Monitor	\$504
M32F	Face Drilled, No Monitoring	\$394
M32FB	Face Drilled, BondSTAT Monitor	\$504
M32FBD	Face Drilled, BondSTAT Monitor & Door Position Switch	\$566
M32FD	Face Drilled, Door Position Switch	\$466



How to Order

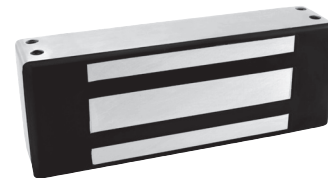
Specify quantity and the following information. Order related products separately.

MODEL SERIES	MOUNTING METHOD	MONITORING OPTIONS	STRIKE PLATE OPTIONS
M32		BD	-SS
M32 (600 lbs)	(blank) Direct Mount F Face Drilled	(blank) No Monitoring B BondSTAT Monitor D Door Position Switch BD BondSTAT Monitor & Door Position Switch	(blank) Standard Strike SS Split Strike (Add \$120)* SASM Shock Absorbing Strike Mount (Add \$75)

*D and BD monitoring options not available with (SS) Split Strike option.

Securitron M62 1,200 lbs Durable Magnalocks®

ITEM	DESCRIPTION	PRICE
M62	No Monitoring	\$504
M62B	BondSTAT Monitor	\$614
M62BD	BondSTAT Monitor & Door Position Switch	\$675
M62D	Door Position Switch	\$577
M62F	Face Drilled	\$504
M62FB	Face Drilled, BondSTAT Monitor	\$614
M62FBD	Face Drilled, BondSTAT Monitor & Door Position Switch	\$675
M62FD	Face Drilled, Door Position Switch	\$577
M62G	Gate Conduit	\$532
M62GB	Gate Conduit, BondSTAT Monitor	\$642
M62GBD	Gate Conduit, BondSTAT Monitor & Door Position Switch	\$705
M62GD	Gate Conduit, Door Position Switch	\$606
M62FG	Face Drilled, Gate Conduit	\$531
M62FGB	Face Drilled, Gate Conduit, BondSTAT Monitoring	\$640
M62FGBD	Face Drilled, Gate Conduit, BondSTAT Monitoring & Door Position Switch	\$703
M62FGD	Face Drilled, Gate Conduit, Door Position Switch	\$608



How to Order *Specify quantity and the following information. Order related products separately.*

MODEL SERIES	MOUNTING METHOD	MONITORING OPTIONS	STRIKE PLATE OPTIONS
M62	FG	BD	-SS
M62 (1200 lbs)	(blank) Direct Mount F Face Drilled G Gate Conduit	(blank) No Monitoring B BondSTAT Monitor D Door Position Switch BD BondSTAT Monitor & Door Position Switch	(blank) Standard Strike OS Offset Strike SS Split Strike (Add \$96)* SASM Shock Absorbing Strike Mount (Add \$75)
<i>*D and BD monitoring options not available with (SS) Split Strike option.</i>			

Securitron M82 1,800 lbs Durable Magnalocks®

ITEM	DESCRIPTION	PRICE
M82B	BondSTAT Monitor	\$706
M82BD	BondSTAT Monitor & Door Position Switch	\$770
M82FB	Face Drilled, BondSTAT Monitor	\$706
M82FBD	Face Drilled, BondSTAT Monitor & Door Position Switch	\$770
M82GB	Gate Conduit, BondSTAT Monitor	\$736
M82GBD	Gate Conduit, BondSTAT Monitor & Door Position Switch	\$797
M82FGB	Face Drilled, Gate Conduit, BondSTAT Monitor	\$737
M82FGBD	Face Drilled, Gate Conduit, BondSTAT Monitor & Door Position Switch	\$799



How to Order *Specify quantity and the following information. Order related products separately.*

MODEL SERIES	MOUNTING METHOD	MONITORING OPTIONS	STRIKE PLATE OPTIONS
M82	FG	BD	-SS
M82 (1800 lbs)	(blank) Direct Mount F Face Drilled G Gate Conduit	B BondSTAT Monitor BD BondSTAT Monitor & Door Position Switch	(blank) Standard Strike OS Offset Strike SS Split Strike (Add \$121)* SASM Shock Absorbing Strike Mount (Add \$75)
<i>*D and BD monitoring options not available with (SS) Split Strike option.</i>			

Aluminum Frame Spacer Bracket

MODEL	DESCRIPTION	BK	CL
ASB-32	For M32	\$68	\$50
ASB-62	For M62	\$68	\$50
ASB-82	For M82	\$95	\$81

Concrete/Wood Bracket

MODEL	DESCRIPTION	BK	CL
CWB-32	For M32	\$75	\$64
CWB-62	For M62	\$68	\$72
CWB-82	For M82	\$102	\$90

Adjustable Z-Bracket

MODEL	DESCRIPTION	BK	CL	SS
ZA-32/62	For M32 and M62	\$190	\$178	\$201
ZA-82	For M82	\$230	\$214	\$241

How to Order Specify quantity and the following information. Order related products separately.

BRACKET TYPE	MODEL SERIES	STRIKE PLATE OPTIONS
ASB	-32	BK
ASB Aluminum Frame Spacer Bracket	32	BK Black Anodized
CWB Concrete/Wood Bracket	62	CL Clear Anodized
ZA Adjustable Z-Bracket	82	SS Satin Stainless

Lock Housing

MODEL	DESCRIPTION	630
HHD	Double Horizontal	\$950
HHSL	Single Horizontal with Left Hand Reverse	\$790
HHSR	Single Horizontal with Right Hand Reverse	\$790
HVD	Double Vertical	\$960

How to Order

Specify quantity and the following information. Order related products separately.

HOUSING TYPE	MODEL SERIES	SPECIFY LENGTH (NOT USED IN PART NUMBER)
HHD	- 32	(83")
HHD	32	HHD Max Length 96"
HHSL	62	HHSL Max Length 48"
HHSR	82	HHSR Max Length 48"
HVD		HVD Max Length 96"

Dress Covers

MODEL	DESCRIPTION	BK	BP	CL	SP
DC-32	For M32	\$49	\$126	\$49	\$126
DC-62	For M62	\$49	\$126	\$49	\$126
DC-82	For M82	\$55	\$132	\$55	\$132
DDC-32	Double — For M32	\$79		\$79	
DDC-62	Double — For M62	\$79		\$79	

How to Order

Specify quantity and the following information. Order related products separately.

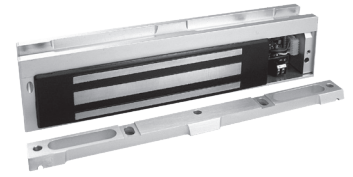
DRESS COVER	MODEL	FINISH
DC	- 32	BK
DC Dress Cover	32	BK Black Anodized
DDC Double Dress Cover	62	BP Brass Polished
(available in models 32 & 62 in BK and CL finishes only)	82	CL Clear Anodized
		SP Stainless Polished

Securitron M32, M62, M82 Accessories

ITEM	DESCRIPTION	PRICE
AOS-62	Offset Strike Plate for M62	\$134
AOS-62D	Offset Strike Plate for M62D	\$166
AOS-82	Offset Strike Plate for M82	\$177
APS-32	Strike Plate for M32	\$126
APS-62	Strike Plate for M62	\$140
APS-82	Strike Plate for M82	\$164
ASS-32	Strike Plate for M32— Split Set with Fasteners & Sex Bolt	\$170
ASS-62	Strike Plate for M62— Split Set with Fasteners & Sex Bolt	\$200
ASS-82	Strike Plate for M82— Split Set with Fasteners & Sex Bolt	\$222
EASB-250	Energy Absorbing Bolt — 1/4" Spacer Kit	\$50
EASB-32	Energy Absorbing Sex Bolt for M32	\$289
EASB-62	Energy Absorbing Sex Bolt for M62	\$386
EASB-82	Energy Absorbing Sex Bolt for M82	\$386
SASM	Shock Absorbing Strike Mount for M32, M62, M82	\$79
SB-1	Sex Bolt Replacement, Clear	\$14
SB-1-03	Sex Bolt Replacement, Polished Brass	\$35
SB-1-10B	Sex Bolt Replacement, Oil-Rubbed Bronze	\$35
TDK-1	Thick Door Kit	\$32

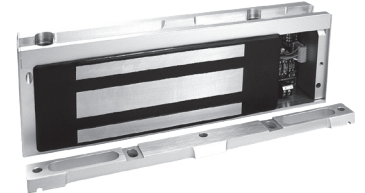
Securitron M38 600 lbs Durable Magnalocks®

ITEM	DESCRIPTION	PRICE
M38	12/24 VDC	\$452
M38D	12/24 VDC, DPS	\$526
M38DL	12/24 VDC, DPS, LED	\$559
M38DLS	12/24 VDC, DPS, LED, Senstat	\$631
M38DLST	12/24 VDC, DPS, LED, Senstat, Tamper	\$687
M38DS	12/24 VDC, DPS, Senstat	\$601
M38LS	12/24 VDC, LED, Senstat	\$559



Securitron M68 1,200 lbs Durable Magnalocks®

ITEM	DESCRIPTION	PRICE
M68	12/24 VDC	\$564
M68D	12/24 VDC, DPS	\$637
M68DL	12/24 VDC, DPS, LED	\$669
M68DLS	12/24 VDC, DPS, LED, Senstat	\$742
M68DLST	12/24 VDC, DPS, LED, Senstat, Tamper	\$798
M68DS	12/24 VDC, DPS, Senstat	\$711
M68S	12/24 VDC, Senstat	\$637
M68LS	12/24 VDC, LED, Senstat	\$669



Accessories

ITEM	DESCRIPTION	PRICE
DC-38SP	Stainless Polished Dress Cover for M38	\$126
DC-68SP	Stainless Polished Dress Cover for M68	\$126
TJ-38CL	Clear Anodized In-Swing Door Kit for M38	\$209
TJ-68CL	Clear Anodized In-Swing Door Kit for M68	\$209

How to Order

Specify quantity and the following information. Order related products separately.

MODEL SERIES	MONITORING OPTIONS
M38	DLST
M38 (600lbs)	(blank) No Monitoring
M68 (1,200 lbs)	D Door Position Switch
	L LED Indicator
	S Senstat Monitor
	T Tamper Monitor

Header Extension Brackets

MODEL	DESCRIPTION	BK	CL
HEB-1xx-8	1" x 1" x 8"	\$57	\$47
HEB-1xx-12	1" x 1" x 12"	\$67	\$52
HEB-2xx-8	2" x 2" x 8"	\$74	\$62
HEB-2xx-12	2" x 2" x 12"	\$76	\$68
HEB-3xx-8	3" x 3" x 8"	\$85	\$76
HEB-3xx-12	3" x 3" x 12"	\$96	\$80
HEB-3G	3" x 3" x 8" for Glass Door	\$92	

How to Order

Specify quantity and the following information. Order related products separately.

MODEL	SIZE	FINISH	SIZE
HEB	-1	BK	-8
HEB Header Extension	1 1" x 1"	BK Black Anodized	8
	2 2" x 2"	CL Clear Anodized	12
	3 3" x 3"		

Universal Header Brackets

MODEL	DESCRIPTION	BK	CL
UHB-xx-8	8" Header Bracket	\$99	\$84
UHB-xx-12	12" Header Bracket	\$137	\$121

How to Order

Specify quantity and the following information. Order related products separately.

MODEL	FINISH	SIZE
UHB	BK	-8
UHB Universal Header Extension	BK Black Anodized	8"
	CL Clear Anodized	12"

Stop Filler Plates

MODEL	DESCRIPTION	BK	CL
SFP-1/2-xx-8	1/2" x 1-1/4" x 8"	\$43	\$32
SFP-1/2-xx-12	1/2" x 1-1/4" x 12"	\$47	\$36
SPF-1/4-xx-8	1/4" x 1-1/4" x 8"	\$43	\$33
SFP-1/4-xx-12	1/4" x 1-1/4" x 12"	\$47	\$36
SFP-3/8-xx-8	3/8" x 1-1/4" x 8"	\$43	\$33
SFP-3/8-xx-12	3/8" x 1-1/4" x 12"	\$47	\$37
SFP-5/8-xx-8	5/8" x 1-1/4" x 8"	\$43	\$35
SFP-5/8-xx-12	5/8" x 1-1/4" x 12"	\$49	\$38

How to Order

Specify quantity and the following information. Order related products separately.

MODEL	SIZE	FINSH	SIZE
SFP	-1/2	BK	-8
SFP Stop Filler Plate	1/2"	BK Black Anodized	8"
	1/4"	CL Clear Anodized	12"
	3/8"		
	5/8"		

Additional Accessories

ITEM	DESCRIPTION	PRICE
AKG	Adhesive Kit for GDB	\$187
DCP-12x3	Dress Cover Plate, 12" x 3" for larger strikes (M380, M680)	\$37
GDB	Glass Door Bracket	\$77
IK	Installation Kit	\$553

Securitron DM62 Double 1,200 lbs Durable Magnalocks®

ITEM	DESCRIPTION	PRICE
DM62	12/24 VDC	\$1070
DM62B	12/24 VDC, MBS	\$1304
DM62D	12/24 VDC, DPS	\$1231
DM62BD	12/24 VDC, MBS, DPS	\$1439



Accessories

ITEM	DESCRIPTION	PRICE
ASCWB-DM62CL	Alum 1-1/2" Spacer — Concrete/Wood Bracket, DM62, Clear	\$187

How to Order

Specify quantity and the following information. Order related products separately.

MODEL SERIES	MONITORING OPTIONS	STRIKE PLATE OPTIONS
DM62	BD	- OS
DM62	(blank) No Monitoring B BondSTAT Monitor D Door Position Switch	(blank) Standard Strike OS Offset Strike

Securitron M34R 500 lbs. Recessed Magnalocks®

ITEM	DESCRIPTION	PRICE
M34R	12/24 VDC, Recessed	\$446
M34RB	12/24 VDC, Recessed, MBS	\$564
M34RD	12/24 VDC, Recessed, DPS	\$527
M34RBD	12/24 VDC, Recessed, MBS, DPS	\$630



How to Order

Specify quantity and the following information. Order related products separately.

MODEL SERIES	MONITORING OPTIONS
M34R	BD
M34R (500 lbs)	(blank) No Monitoring B BondSTAT Monitor D Door Position Switch

Securitron SAM 1,200 lbs. Shear Aligning Magnalocks®

ITEM	DESCRIPTION	PRICE
SAM	12/24 VDC, Self Aligning	\$1014
SAMB	1,200 lbs. Shear Aligning, MBS	\$1105
SAMD	12/24 VDC, Self Aligning, DPS	\$1080
SAMBD	12/24 VDC, Self Aligning, MBS, DPS	\$1168
SAMN		\$1024



Securitron SAM2-24 600 lbs. Mini Shear Magnalocks®

ITEM	DESCRIPTION	PRICE
SAM2-24	600 lbs. Shear Aligning, MBS	\$800
SAM2C-24	24 VDC, Bond Sensor	\$759



Accessories

ITEM	DESCRIPTION	PRICE
SWB-03	SAM Wood Bracket — Brass Polished	\$175
SWB-10B	SAM Wood Bracket — Oil Rubbed Bronze	\$137
SWB-26D	SAM Wood Bracket — Satin Stainless	\$103
SMLS	Surface Mount Housing Lock — Shear	\$191
SMSS	Surface Mount Housing Strike — Shear	\$185

How to Order

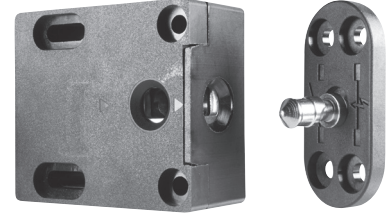
Specify quantity and the following information. Order related products separately.

MODEL SERIES	MONITORING OPTIONS	VOLTAGE
SAM2	C	- 24
SAM2 (600 lbs)	(blank) No Monitoring	24 24 VDC Only
SAM (1,200 lbs)	B BondSTAT Monitor C Bond Sensor D Door Position Switch	(blank) Autosensing dual voltage 12/24 VDC

Cabinet Locks

HES 610 Multi-Purpose Electromechanical Lock

ITEM	DESCRIPTION	PRICE
610	Standard — No Monitoring	\$128
610LM	Locked State Monitoring	\$178



How to Order

Specify quantity and the following information. Order related products separately.

SERIES	OPTION(S)
610	– LM
610 Cabinet Lock	(blank) No Monitoring LM Locked State Monitoring

HES 660 Multi-Purpose Electromechanical Lock

MODEL	BLK
660	\$155
660-LBSM	\$192
660-Preload	\$231
660-LBSM-Preload	\$264
660-LBSM-20PK	\$3838



Accessories

ITEM	DESCRIPTION	PRICE
660-KO	660 Key override	\$87

How to Order

Specify quantity and the following information. Order related products separately.

SERIES	VOLTAGE	OPTION(S)
660	– 12V	– LBSM – Preload
660 Cabinet Lock	12V 12 Volt 24V 24 Volt	(blank) No preload, no monitoring Preload Up to 15 lbs LBSM Locked state monitoring LBSM-20PK Locked state monitoring 20 pack LBSM-Preload Locked state monitoring with Preload

HES 630REL Series Cabinet Lock

ITEM	DESCRIPTION	PRICE
630REL-XT-XXXXXX	Ruggedized Electromechanical Auxiliary Deadlock	\$1095
K200-630REL-IPS-XT-XXXXXX	Ruggedized Integrated Electronic Access Control Auxiliary Deadlock	\$1558



How to Order

Specify quantity and the following information. Order related products separately.

SERIES	MODEL	KEY OVERRIDE
630	REL	-XT-XXXXXX
	REL Ruggedized (Weather Resistant) Electromechanical Auxiliary Deadlock	XT-XXXXXX MEDECO XT Intelligent Keyway (Field Programming Required)

Note: Locked State Monitoring (Included Standard)

How to Order

Specify quantity and the following information. Order related products separately.

SERIES	MODEL	CARD TECHNOLOGY	KEY OVERRIDE
K200-630	REL	-IPS	-XT-XXXXXX
	REL Ruggedized (Weather Resistant) Electromechanical Integrated Access Control Auxiliary Deadlock	IPS HID Prox®, Kantech ioProx, HID iCLASS®, HID iCLASS SE® (SIO-enabled), HID iCLASS® Seos™, HID MIFARE® SE, HID DESFire® EV1 SE, MIFARE Classic, MIFARE DESFire EV1, NFC-enabled mobile phones	XT-XXXXXX MEDECO XT Intelligent Keyway (Field Programming Required)

HES K20 Series Cabinet Lock

MODEL	DESCRIPTION	BLK
K20	Stand-alone 13.56 MHz RFID Cabinet Lock	\$145



HES KP20 Series Cabinet Lock

MODEL	DESCRIPTION	BLK
KP20	Stand-alone Keypad Cabinet Lock	\$125



HES K100 Aperio® Factory Paired Cabinet Lock with AH20 Wiegand Hub

ITEM	DESCRIPTION	PRICE
K100-622H-IPS-BP	HID multiCLASS SE, Black, Pinch Knob, For 1/16" to 1/2" Thick Doors	\$918
K100-622H-IPS-BP2	HID multiCLASS SE, Black, Pinch Knob, For ≥1/2" to 1-1/2" Thick Doors	\$928
K100-622H-IPS-BP3	HID multiCLASS SE, Black, Pinch Knob, For ≤ 1-1/2" to 2-1/4" Thick Doors	\$938
K100-622H-IPS-BL	HID multiCLASS SE, Black, Lever Knob, For 1/16" to 1/2" Thick Doors	\$918
K100-622H-IPS-BL2	HID multiCLASS SE, Black, Lever Knob, For ≤ 1/2" to 1-1/2" Thick Doors	\$928
K100-622H-IPS-BL3	HID multiCLASS SE, Black, Lever Knob, For ≤ 1-1/2" to 2-1/4" Thick Doors	\$938



HES K100 Demo Mounts

ITEM	DESCRIPTION	PRICE
DEMO-K100-622-IPS-BL	K100 Demo Mount, HID multiCLASS SE, Black, Lever Knob	\$1057
DEMO-K100-622-IPS-BP	K100 Demo Mount, HID multiCLASS SE, Black, Pinch Knob	\$1057

Accessories

ITEM	DESCRIPTION	PRICE
OBS-622	K Series Open Back Strike Plate	\$26

How to Order Specify quantity and the following information. Order related products separately.

SERIES	MODEL	CREDENTIAL TECHNOLOGY	COLOR	KNOB TYPE	SHAFT LENGTH (DOOR THICKNESS)
K100	- 622H	- IPS	- B	P	2
	622H* Factory Paired* for Doors with AH20 1:1 Wiegand Hub	IPS HID Prox®, Kantech ioProx, HID iCLASS®, HID iCLASS SE® (SIOenabled), HID iCLASS® Seos™, HID MIFARE® SE, HID DESFire® EV1 SE, MIFARE Classic, MIFARE DESFire EV1, NFC-enabled mobile phones	B Black	P Pinch L Lever	_(Blank) 1/16" to 1/2" (standard) 2 ≥ 1/2" to 1-1/2" 3 ≥ 1-1/2" to 2-1/4"

*Kit includes integrated lock paired with Wiegand 1:1 wireless hub.

HES K100: The HES K100 Cabinet Lock is available as either a pre-paired lock and hub kit (no certification required) or as a field configurable component (requires Aperio® Certified Integrator certification). Pre-paired kits support limited features. Field configured devices are required in order to support all options. Visit www.IntelligentOpenings.com to learn more.

HES K200 Series Wiegand Cabinet Lock

ITEM	DESCRIPTION	PRICE
K200-622-B2	Wiegand, multiCLASS Reader, Black, Pinch	\$645



HES KS200 Series Server Cabinet Lock

ITEM	DESCRIPTION	PRICE
KS200-640	Wiegand, multiCLASS SE, Black	\$599



Accessories

ITEM	DESCRIPTION	PRICE
OBS-622	K Series Open Back Strike Plate	\$26
CBL6-QC12	Lock Side Interface Cable: 6 Foot, 12 Conductor and Molex both ends	\$55
CBL12-QC12	System Side Interface Cable: 12 Foot, 12 Conductor and Molex one end, pinned one end	\$75
SFIC	MEDECO X4 (2 Keys—1 Control, 1 User)	\$89
SFIC-BC	KS SFIC Blank, Black Plastic Core	\$5
KS-DPS	Surface Mount DPS (external)	\$21
KS-CAM45	CAM: 45MM—5	\$5
KS-CAM38	CAM: 38MM—1	\$5
WT-1	Wiegand Test Box with LED Indicators	\$415
WT-2	Wiegand Test Box with LCD Backlit Display with LED Indicators	\$520

Securitron MCL 180 lbs Cabinet Magnalocks®

ITEM	DESCRIPTION	PRICE
MCL-24	24 VDC	\$250



Securitron M32-SS 600 lbs Cabinet Magnalocks®

ITEM	DESCRIPTION	PRICE
M32-SS	Standard — No Monitoring	\$525
M32B-SS	BondSTAT monitoring	\$637



Specialty Locks

Securiton GL1 Specialty Gate Locks

ITEM	DESCRIPTION	PRICE
GL1-FL	Gate Lock, 12/24 VDC, Standard Fail Locked	\$399
GL1-FLM	Gate Lock, 12/24 VDC, Fail Locked Monitored	\$411
GL1-FS	Gate Lock, 12/24 VDC, Standard Fail Safe	\$399
GL1-FSM	Gate Lock, 12/24 VDC, Fail Safe Monitored	\$411



Accessories

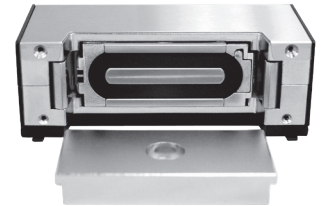
ITEM	DESCRIPTION	PRICE
FMB9-4	Post Shim Kit for Flex Mount Brackets — (Set of 4)	\$27
FMK-SL	Flex Mount Kit for Sliding Gate	\$125
FMK-SW	Flex Mount Kit for Swinging Gate	\$155
GMC	Gate Lock Mortise Cylinder (for use with FL Models only)	\$43

How to Order Specify quantity and the following information. Order related products separately.

MODEL SERIES	LOCK FAIL STATE	MONITORING OPTIONS
GL1	- FS	
GL1	FL Fail Locked (Fail Secure) FS Fail Safe	(blank) No Monitoring M Monitored

Securiton MM15 Specialty Electromechanical Magnalock

ITEM	DESCRIPTION	PRICE
MM15	12/24 V, AC/DC	\$520
MM15DT	12/24 V, AC/DC, DPS, Tamper Switch	\$636
MM15G	12/24 V, AC/DC, Gate Conduit	\$578
MM15GDT	12/24 V, AC/DC, Gate Conduit, DPS, Tamper Switch	\$669



How to Order Specify quantity and the following information. Order related products separately.

MODEL SERIES	MOUNTING METHOD	MONITORING OPTIONS
MM15	G	DT
MM15	(blank) Direct Mount G Gate Conduit	(blank) No Monitoring DT Door Position Switch and Tamper Switch

Dress Cover

MODEL	BK	BP	BS
DC-MM15	\$45	\$116	\$126

Tamper Shield

ITEM	PRICE
MM15-TS	\$46

Brackets

MODEL	DESCRIPTION	BK	CL
HEB-1xx-MM15	1" Header Extension Bracket	\$56	\$43
HEB-2xx-MM15	2" Header Extension Bracket	\$56	\$43
HEB-3xx-MM15	3" Header Extension Bracket	\$56	\$43
SFP-1/2xxMM15	1/2" Stop Filler Plate	\$48	\$36
SFP-3/8xxMM15	3/8" Stop Filler Plate	\$48	\$36
SFP-5/8xxMM15	5/8" Stop Filler Plate	\$50	\$38
Z-MM15	Z-Bracket	\$133	\$119

How to Orders Specify quantity and the following information. Order related products separately.

MODEL	FINISH
DC-MM15	BK
DC-MM15 Dress Cover for MM15	BK Black BP Brass Polished BS Brass Satin

MODEL	SIZE	FINISH
HEB	-1	BK-MM15
HEB Header Extension	1 1" x 1" 2 2" x 2" 3 3" x 3"	BK Black Anodized CL Clear Anodized

MODEL	SIZE	FINISH
SFP	-1/2	BK-MM15
SFP Stop Filler Plate	1/2" 3/8" 5/8"	BK Black Anodized CL Clear Anodized

Keypads & Card Readers

Securitron DK-12 Stand Alone Keypad

ITEM	DESCRIPTION	PRICE
DK-12	Digital Keypad System with Illuminated keys — Single Gang	\$203



Securitron DK-16 Keypad System

ITEM	DESCRIPTION	PRICE
DK-16	Keypad and Controller — Indoor, Single Gang	\$431
DK-16P	Keypad only — Indoor, Single Gang	\$213



Securitron DK-26 Keypad Systems

MODEL	DESCRIPTION	BK	SS
DK-26	Keypad and Controller — Narrow Stile	\$453	\$440
DK-26P	Keypad only — Narrow Stile	\$236	\$224



Securitron DK-37 Wiegand Keypads

MODEL	DESCRIPTION	BK	SS
DK-37W	Narrow Stile with Wiegand Output	\$243	\$232



How to Order

Specify quantity and the following information. Order related products separately.

MODEL SERIES	SPECIAL FEATURE	FINISH
DK-26	P	BK
DK-26 Keypad	P Keypad only	BK Black Anodized SS Stainless Steel

How to Order

Specify quantity and the following information. Order related products separately.

MODEL SERIES	OUTPUT	FINISH
DK-37	W	BK
DK-37 Keypad	W Wiegand Output	BK Black Anodized SS Stainless Steel

Securitron DK-38 Wiegand Keypads

MODEL	DESCRIPTION	SS
DK-38W	Single Gang with Wiegand Output	\$232



Accessories

ITEM	DESCRIPTION	PRICE
WBB	Wall Mounted, Weatherized, Single Gang Box	\$41
WCC	Wall Mounted, Weather Cover, Single Gang Box	\$56

Securitron R100 Aperio® Card Reader Factory Paired with Wiegand Hub

MODEL	DESCRIPTION	BLK
R100H-IPS	Aperio Reader with Paired Hub	\$815



Accessories

ITEM	DESCRIPTION	PRICE
R100-DPK	Dress plate kit	\$31

Securitron R100 Demo Mount

ITEM	DESCRIPTION	PRICE
DEMO-R100-IPS-B		\$927

How to Order

Specify quantity and the following information. Order related products separately.

SERIES	MODEL	CARD TECHNOLOGY	COLOR
R100	H	– IPS	– B
	H Factory Paired with AH20 1:1 Wiegand Hub	IPS HID Prox®, Kantech ioProx, HID iCLASS®, HID iCLASS SE® (SIO-enabled), HID iCLASS® Seos™, HID MIFARE® SE, HID DESFire® EV1 SE, MIFARE Classic, MIFARE DESFire EV1, NFC-enabled mobile phones	B Black

*Kit includes integrated lock paired with Wiegand 1:1 wireless hub

Push Buttons & Egress Devices

Securitron XMS Request to Exit Motion Sensor

ITEM	DESCRIPTION	PRICE
XMS	Passive Infrared Request to Exit Device	\$244



Securitron EEB Emergency Exit Push Buttons

ITEM	DESCRIPTION	PRICE
EEB2	Momentary, SPDT, Single Gang, Green/Red/Blue/Handicap, 30 Sec. Timer	\$154
EEB3N	Momentary, SPDT, Narrow, Green/Red, 30 Sec. Timer	\$154



Accessories

ITEM	DESCRIPTION	PRICE
PB2-LK	2" Button, Illumination Kit for PB2E, PB5E, EEB2 Series Push Button	\$31
PB3-LK	Illumination Kit, Green/Red for PB3E/EEB3N Series	\$31
WBB	Wall Mounted, Weatherized, Single Gang Box	\$41
WCC	Wall Mounted, Weather Cover, Single Gang Box	\$56

How to Order Specify quantity and the following information. Order related products separately.

MODEL SERIES	LED LENS COLOR	MOUNTING METHOD
EEB	3	N
EEB Push Buttons	2 Green/ Red/ Handicap 3 Green/Red	(blank) Single Gang N Narrow Stile

NOTE: Not every combination above is possible. Please contact the factory if you need a combination of features not listed on this page.

Securitron PB Exit Push Buttons

ITEM	DESCRIPTION	PRICE
PB	1 1/2" button, Illuminated, Momentary, DPST, Single Gang, Green/Red Lens	\$170
PBA	1 1/2" button, Illuminated, Alternate, DPST, Single Gang, Green/Red Lens	\$170



Accessories

ITEM	DESCRIPTION	PRICE
WBB	Wall Mounted, Weatherized, Single Gang Box	\$41
WCC	Wall Mounted, Weather Cover, Single Gang Box	\$56

How to Order Specify quantity and the following information. Order related products separately.

MODEL SERIES	SWITCH TYPE
PB	A
PB Push Button	(blank) Momentary Switch A Alternate Switch

Securitron PB2 Exit Push Buttons

ITEM	DESCRIPTION	PRICE
PB2	2" Button, Illuminated, Momentary, Single Gang, Green/Red/Handicap	\$109
PB22	2" Button, Illuminated, Momentary, DPDT, Single Gange, Green/Red/Handicap	\$170
PB2E	2" Button, Non-Illuminated, Momentary, Single Gang, SPDT, Green/Red/Handicap	\$78

Accessories

ITEM	DESCRIPTION	PRICE
PB2-LK	2" Button, Illumination Kit for PB2E, PB5E, EEB2 Series Push Button	\$31
WBB	Wall Mounted, Weatherized, Single Gang Box	\$41
WCC	Wall Mounted, Weather Cover, Single Gang Box	\$56

How to Order *Specify quantity and the following information. Order related products separately.*

MODEL SERIES	ILLUMINATION	SWITCH PULL/THROW
PB2		2
PB2 Push Button	(blank) Illuminated E Non-Illuminated	(blank) Single Pole, Double Throw 2 Double Pole, Double Throw

NOTE: Not every combination above is possible. Please contact the factory if you need a combination of features not listed on this page.



Securitron PB3 Push Buttons

ITEM	DESCRIPTION	PRICE
PB3	3/4" Rectangle Button, Illuminated, Momentary, DPST/DPDT, Single Gang, Green/Red Lens	\$117
PB3A	3/4" Rectangle Button, Illuminated, Alternate, DPST/DPDT, Single Gang, Green/Red Lens	\$117
PB3E	3/4" Rectangle Button, Non-Illuminated, Momentary, DPST/DPDT, Single Gang, Green/Red Lens	\$87
PB3EA	3/4" Rectangle Button, Non-Illuminated, Alternate, DPST/DPDT, Single Gang, Green/Red Lens	\$87
PB3N	3/4" Rectangle Button, Illuminated, Momentary, DPST/DPDT, Narrow, Green/Red Lens	\$117
PB3AN	3/4" Rectangle Button, Illuminated, Alternate, DPST/DPDT, Narrow, Green/Red Lens	\$117
PB3EN	3/4" Rectangle Button, Non-Illuminated, Momentary, DPST/DPDT, Narrow, Green/Red Lens	\$87
PB3EAN	3/4" Rectangle Button, Non-Illuminated, Alternate, DPST/DPDT, Narrow, Green/Red Lens	\$87
PB3ER	3/4" Rectangle Button, Non-Illuminated, Remote, Momentary, DPST/DPDT, Surface Mount Green/Red Lens	\$87
PB3EAR	3/4" Rectangle Button, Non-Illuminated, Remote, Alternate, DPST/DPDT, Surface Mount Green/Red Lens	\$87

Accessories

ITEM	DESCRIPTION	PRICE
PB3-LK	Illumination Kit, Green/Red for PB3E/EEB3N Series	\$31
WBB	Wall Mounted, Weatherized, Single Gang Box	\$41
WCC	Wall Mounted, Weather Cover, Single Gang Box	\$56

How to Order *Specify quantity and the following information. Order related products separately.*

MODEL SERIES	ILLUMINATION	SWITCH TYPE	MOUNTING METHOD
PB3		A	N
PB3 Push Button	(blank) Illuminated E Non-Illuminated	(blank) Momentary Switch A Alternate Switch	(blank) Single Gang 2 Double Gang N Narrow Stile R Remote, Surface Mount



Securitron PB4L Push Buttons

ITEM	DESCRIPTION	PRICE
PB4L-2	1/2" Round Button, Green Illuminated Halo, Momentary, DPDT, Single Gang, Green/Red LED	\$146
PB4LA-2	1/2" Round Button, Green Illuminated Halo, Alternate, DPDT, Single Gang, Green/Red LED	\$146
PB4LAN-2	1/2" Round Button, Green Illuminated Halo, Alternate, DPDT, Narrow Stile, Green/Red LED	\$146
PB4LN-2	1/2" Round Button, Green Illuminated Halo, Momentary, DPDT, Narrow Stile, Green/Red LED	\$146



How to Order *Specify quantity and the following information. Order related products separately.*

MODEL SERIES	SWITCH TYPE	MOUNTING METHOD	SWITCH PULL/THROW
PB4L	A	N	-2
PB4L Push Button	(blank) Momentary Switch A Alternate Switch	(blank) Single Gang N Narrow Stile	2 Double Pole, Double Throw Switch

Securitron PB5 Push Buttons

ITEM	DESCRIPTION	PRICE
PB5	2" Round Button, Illuminated, Momentary, SPDT, Single Gang, Green/Red/Handicap	\$133
PB5E	2" Round Button, Non-Illuminated, Momentary, SPDT, Single Gang, Green/Red/Handicap	\$102

Accessories

ITEM	DESCRIPTION	PRICE
PB2-LK	2" Button, Illumination Kit for PB2E, PB5E, EEB2 Series Push Button	\$31
WBB	Wall Mounted, Weatherized, Single Gang Box	\$41
WCC	Wall Mounted, Weather Cover, Single Gang Box	\$56

How to Order

Specify quantity and the following information. Order related products separately.

MODEL SERIES	ILLUMINATION
PB5	E
PB5 Push Button	(blank) Illuminated E Non-Illuminated



Securitron MK Key Switches

ITEM	DESCRIPTION	PRICE
MK	Momentary, SPDT, Single Gang, Green/Red LED	\$147
MK2	Momentary, DPDT, Single Gang, Green/Red LED	\$172
MKA	Alternate, SPDT, Single Gang, Green/Red LED	\$147
MKA2	Alternate, DPDT, Single Gang, Green/Red LED	\$172
MKAN	Alternate, SPDT, Narrow, Green/Red LED	\$147
MKAN2	Alternate, DPDT, Narrow, Green/Red LED	\$172
MKN	Momentary, SPDT, Narrow, Green/Red LED	\$147
MKN2	Momentary, DPDT, Narrow, Green/Red LED	\$172
MKPZ	Momentary, SPDT, Double Gang, Green/Red LED, Audible	\$221
MKAPZ	Alternate, SPDT, Double Gang, Green/Red LED, Audible	\$221



Accessories

ITEM	DESCRIPTION	PRICE
MKC-KD	Mortise Cylinder for MK Series – Keyed Differently	\$66
MKC-KA	Mortise Cylinder for MK Series – Keyed Alike	\$66
MKS	Momentary, Switch Only	\$37
MKS2	DPDT Momentary, Switch Only	\$63
MKSA	Alternate, Switch Only	\$37
MKSA2	DPDT Alternate, Switch Only	\$63

How to Order

Specify quantity and the following information. Order related products separately.

MODEL SERIES	SWITCH TYPE	MOUNTING METHOD	SPECIAL FEATURE
MK	A	N	2
MK Mortise Key Switch	(blank) Momentary Switch A Alternate Switch	(blank) Switch Gang P Double Gang N Narrow Gang	Z Audible 2 DPDT—Double Pole, Double Throw

Note: Not every combination above is possible.

Please contact the factory if you need a combination of features not listed on this page.

Securitron KP-1 Tubular Key Switches

ITEM	DESCRIPTION	PRICE
KP1	Momentary Switch	\$185
KP1A	Alternate Switch	\$185



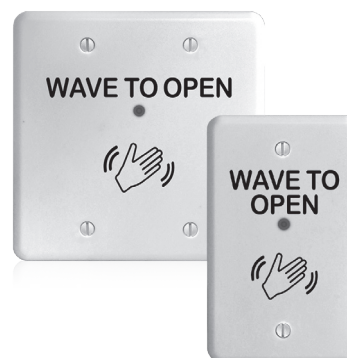
How to Order

Specify quantity and the following information. Order related products separately.

MODEL SERIES	SWITCH TYPE
KP1	A
KP1 Tubular Key Switch	(blank) Momentary Switch A Alternate Switch

Securitron WSS Wave Sense™ Switch

ITEM	DESCRIPTION	PRICE
WSS-WSD	Wave Sense Switch, White Single/ Double Gang Faceplate	\$411



Accessories

ITEM	DESCRIPTION	PRICE
WBB	Wall Mounted, Weatherized, Single Gang Box	\$41
WCC	Wall Mounted, Weather Cover, Single Gang Box	\$56

Securitron SP-1 Capacitive Button

ITEM	DESCRIPTION	PRICE
SP-1	Touch Sense Plate	\$202
SP-1L	Label Touch Plate [SP-1]	\$8
SP-1LH	Label Touch Plate [SP-1] — Handicap Decal	\$8



How to Order

Specify quantity and the following information. Order related products separately.

MODEL SERIES	LABEL
SP-1	
SP-1 Touch Sense Plate, Clear Anodized	L Touch To Exit LH Handicap

Securitron DSB Dual Sense® Egress Bar

MODEL	DESCRIPTION	BK	CL
DSB	Non-Illuminated, 36" (Standard), 42", or 48"	\$541	\$531
DSB-xxI	Illuminated, 36" (Standard), 42", or 48"	\$717	\$707
EL-DSB	ElectroLynx, Illuminated, 36" Only	\$576	\$570



Accessories

ITEM	DESCRIPTION	PRICE
DSB-TDM	Through Door Mounting Kit for DSB	\$18
TCP-CL	Touch Bar Cover Plates — Set of 2, Clear Anodized	\$96
TCP-BK	Touch Bar Cover Plates — Set of 2, Black Anodized	\$96

How to Order *Specify quantity and the following information. Order related products separately.*

CONNECTOR STYLE	MODEL SERIES	FINISH	ILLUMINATION	BAR LENGTH
EL	- DSB	- CL	I	42
(blank) No Connectors	DSB Dual Sense Bar	BK Black Anodized	(blank) Non Illuminated	(blank) 36" Standard Unit
EL ElectroLynx Connectors		CL Clear Anodized	I Illuminated	42 42" Length 48 48" Length

Note: Not every combination above is possible. Please contact the factory if you need a combination of features not listed on this page.

Securitron TSB Touch Sense® Egress Bar

MODEL	DESCRIPTION	BK	CL
TSB	36" (Standard), 42", or 48"	\$492	\$469
TSB-xxT	Trailing Edge Timer [3 Sec.] — BK 36" only, CL 36" or 42"	\$492	\$469
EL-TSB	ElectroLynx — 36" (Standard), 42", or 48"	\$512	\$489
DTSB	Dummy with End Caps & Fasteners — 36" (Standard), 42", or 48"	\$265	\$240



Accessories

ITEM	DESCRIPTION	PRICE
TSB-TDM	Through Door Mounting Kit for TSB	\$17
TCP-BK	Touch Bar Cover Plates — Set of 2, Black Anodized	\$96
TCP-CL	Touch Bar Cover Plates — Set of 2, Clear Anodized	\$96

How to Order *Specify quantity and the following information. Order related products separately.*

CONNECTOR STYLE	MODEL SERIES	FINISH	SPECIAL FEATURES	BAR LENGTH
EL	- TSB	- CL	T	- 42
(blank) No Connectors	TSB Touch Sense Bar	BK Black Anodized	T Trailing Edge Timer	(blank) 36" Standard Unit
EL ElectroLynx Connectors		CL Clear Anodized		42" 48"

Note: Not every combination above is possible. Please contact the factory if you need a combination of features not listed on this page.

Securitron EMB Electromechanical Egress Bar

MODEL	DESCRIPTION	BK	CL
EMB	36" (Standard), 42", or 48"	\$298	\$285
WEMB	Weather Resistant, 36" (Standard), 42", or 48"	\$328	\$315



Accessories

MODEL	DESCRIPTION	BK	CL
TCP	Touch Bar Cover Plates — Set of 2	\$96	\$96

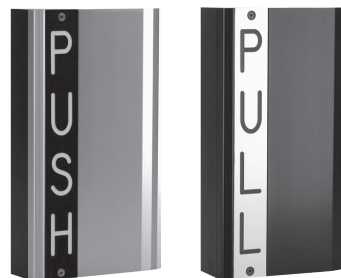
How to Order

Specify quantity and the following information. Order related products separately.

MODEL SERIES	FINISH	BAR LENGTH
EMB	– CL	– 48
EMB Electromechanical Bar	BK Black Anodized	(blank) 36" Standard Unit
WEMB Weather Resistant Electromechanical Bar	CL Clear Anodized	42" 48"

Securitron TSH Touch Sense® Handle

MODEL	DESCRIPTION	BK	CL
TSH	Push/Pull	\$482	\$482
EL-TSH	ElectroLynx — Push/Pull	\$512	\$512



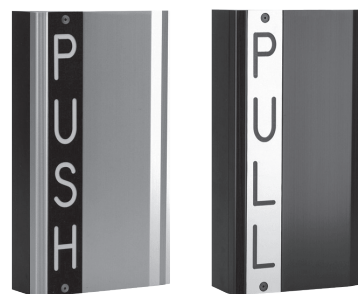
How to Order

Specify quantity and the following information. Order related products separately.

CONNECTOR STYLE	MODEL SERIES	FINISH
EL	– TSH	– CL
(blank) No Connectors	TSH Touch Sense Handle	BK Black Anodized
EL ElectroLynx Connectors		CL Clear Anodized

Securitron EMH Electromechanical Handle

MODEL	DESCRIPTION	BK	CL
EMH	Push/Pull	\$476	\$476
EL-EMH	ElectroLynx — Push/Pull		\$499



How to Order

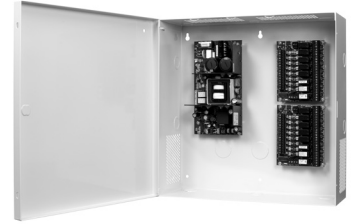
Specify quantity and the following information. Order related products separately.

CONNECTOR STYLE	MODEL SERIES	FINISH
EL	– EMH	– CL
(blank) No Connectors	EMH Electromechanical Handle	BK Black Anodized
EL ElectroLynx Connectors		CL Clear Anodized

Power

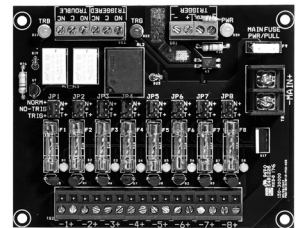
Securitron AQD & AQS Series Power Supplies with Enclosures

ITEM	DESCRIPTION	PRICE
AQD1	1 Amp, Dual Voltage Power Supply with enclosure	\$194
AQD2	2 Amp, Dual Voltage Power Supply with enclosure	\$224
AQD4	4 Amp, Dual Voltage Power Supply with enclosure	\$265
AQD6	6 Amp, Dual Voltage Power Supply with enclosure	\$326
AQS1210	10 Amp, 12 VDC Power Supply with enclosure	\$366
AQS1216	16 Amp, 12 VDC Power Supply with enclosure	\$398
AQS2410	10 Amp, 24 VDC Power Supply with enclosure	\$398



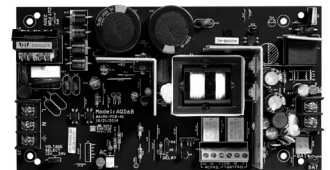
Securitron AQD & AQS Series Distribution Boards

ITEM	DESCRIPTION	PRICE
PDB-1R	Fire Trigger / Relay Interface Board	\$40
PDB-4F1	4 Glass Fused Outputs, 1 Amp each	\$40
PDB-4F2	4 Glass Fused Outputs, 2 Amp each	\$40
PDB-4C1	4 PTC Outputs, 1 Amp each	\$40
PDB-4C2	4 PTC Outputs, 2 Amp each	\$40
PDB-8F1	8 Glass Fused Outputs, 1 Amp each	\$45
PDB-8F2	8 Glass Fused Outputs, 2 Amp each	\$45
PDB-8C1	8 PTC Outputs, 1 Amp each	\$45
PDB-8C2	8 PTC Outputs, 2 Amp each	\$45
PDB-8F8R1	8 Glass Fused Outputs with Relays, Fire Trigger, 1 Amp each	\$112
PDB-8F8R2	8 Glass Fused Outputs with Relays, Fire Trigger, 2 Amp each	\$112
PDB-8C8R1	8 PTC Outputs with Relays, Fire Trigger, 1 Amp each	\$112
PDB-8C8R2	8 PTC Outputs with Relays, Fire Trigger, 2 Amp each	\$112
PDB-8C1R1	8 PTC Outputs, Fire Trigger/Relay, 1 Amp each	\$92
PDB-8C1R2	8 PTC Outputs, Fire Trigger/Relay, 2 Amp each	\$92
PDB-8F1R1	8 Glass Fuse Outputs, Fire Trigger/Relay, 1 Amp each	\$92
PDB-8F1R2	8 Glass Fuse Outputs, Fire Trigger/Relay, 2 Amp each	\$92



Securitron AQD & AQS Series Power Supply Boards Only

ITEM	DESCRIPTION	PRICE
AQD1B	1 Amp, Dual Voltage Power Supply Board Only	\$122
AQD2B	2 Amp, Dual Voltage Power Supply Board Only	\$142
AQD4B	4 Amp, Dual Voltage Power Supply Board Only	\$173
AQD6B	6 Amp, Dual Voltage Power Supply Board Only	\$224
AQS1210B	10 Amp, 12 VDC Power Supply Board Only	\$255
AQS1216B	16 Amp, 12 VDC Power Supply Board Only	\$280
AQS2410B	10 Amp, 24 VDC Power Supply Board Only	\$280



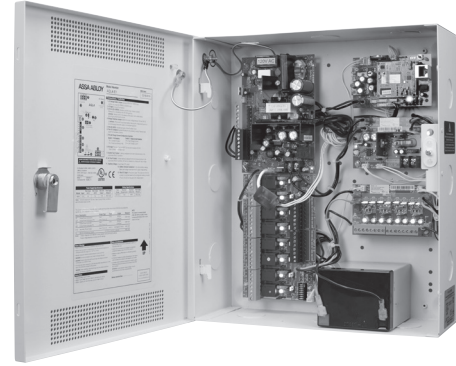
How to Order Specify quantity and the following information. Order related products separately.

MODEL SERIES	OUTPUT TYPE	VOLTAGE	OUTPUT POWER	ENCLOSURE STYLE	NUMBER OF OUTPUTS	FUSE TYPE	NUMBER OF RELAYS	RELAYS	FUSE SIZE
AQ	D		6	-	8	F	8	R	2
AQ	D Dual Voltage *	(blank) Dual Voltage *	1 *	- In Enclosure	(blank) One Output, No Distribution Board				
	S Single Voltage **	12 12 VDC **	2 *	B Circuit Board Only	4	F Glass + Fuses	1	R Relays	1 1 Amp
			4 *		8	C PTC + Polyswitch	2		2 2 Amp
			6 *		12		8		
			10 **		16		9		
			16 **				16		

*Dual Voltage Option Only. **Single Voltage Option Only. † Fuse type and size must be the same for both distribution boards for standard ordering. For custom configurations, please contact the factory at 800.626.7590.

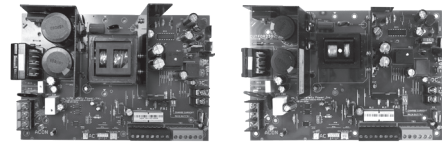
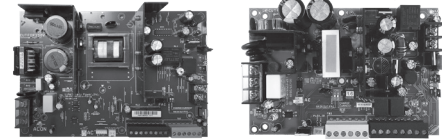
Securitron AQL Series Power Supplies with E1 Enclosures

ITEM	DESCRIPTION	PRICE
AQL4-E1	4 Amp at 12 VDC or 3 Amp at 24 VDC Power Supply with E1 Enclosure	\$295
AQL6-E1	6 Amp, Dual Voltage Power Supply with E1 Enclosure	\$361
AQL102-E1	10 Amp at 12 VDC, Single Voltage Power Supply with E1 Enclosure	\$391
AQL104-E1	10 Amp at 24 VDC, Single Voltage Power Supply with E1 Enclosure	\$419



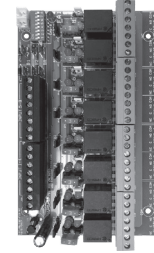
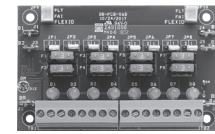
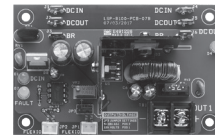
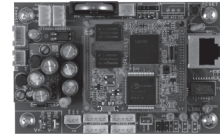
Securitron AQL Series Power Supplies Boards Only

ITEM	DESCRIPTION	PRICE
AQL4	4 Amp at 12 VDC or 3 Amp at 24 VDC, Dual Voltage Power Supply Board Only	\$219
AQL6	6 Amp, Dual Voltage Power Supply Only	\$268
AQL102	10 Amp at 12 VDC, Single Voltage Power Supply Only	\$298
AQL104	10 Amp at 24 VDC, Single Voltage Power Supply Only	\$326



Securitron AQL Series Modules

ITEM	DESCRIPTION	PRICE
B100	Secondary Voltage Module	\$77
D8	3 A ATO Fused Power Distribution Module	\$52
D8P	2.5 A Polyswitch Fused Power Distribution Module	\$52
R8	Power Relay Module	\$107
NL4	Netlink™ Power Monitoring Module	\$411



Securitron AQL Series Common Configurations

ITEM	DESCRIPTION	PRICE
AQL4-R8E1	4 Amp at 12 VDC or 3 Amp at 24 VDC Power Supply, Power Relay Module with E1 Enclosure	\$402
AQL6-B100R8E1	6 Amp, Dual Voltage Power Supply, Secondary Voltage Module, Power Relay Module with E1 Enclosure	\$545
AQL102-2D8E1	10 Amp at 12 VDC, Single Voltage Power Supply, (2) 3 Amp ATO Fused Power Distribution Modules with E1 Enclosure	\$495
AQL104-B1002D8E1	10 Amp at 24 VDC, Single Voltage Power Supply, Secondary Voltage Module, (2) 3 Amp ATO Fused Power Distribution Module with E1 Enclosure	\$599

Models

MODELS	AMPERAGE	RATED VOLTAGE	INPUT VOLTAGE	TYPICAL OUTPUT VOLTAGE	MULTI-VOLTAGE READY	CLASS 2 OUTPUTS
Securitron AQL4*	4	12 VDC	120/230 VAC	12.5 or 25 VDC	Yes	Yes
	3	24 VDC				
Securitron AQL6	6	12 or 24 VDC	120/230 VAC	12.5 or 25 VDC	Yes	with PTC distribution boards
Securitron AQL102	10	12 VDC	120/230 VAC	12.5 VDC	Yes**	with PTC distribution boards
Securitron AQL104	10	24 VDC	120/230 VAC	25 VDC	Yes	with PTC distribution boards

*Securitron AQL4 is field selectable. **Multi-voltage of 5 to 9 VDC only

How to Order Specify quantity and the following information. Order related products separately.

POWER SUPPLY MODULE	SECONDARY VOLTAGE MODULE	DISTRIBUTION MODULE	D8 FUSE STYLE	RELAY MODULE	NETLINK MODULE	ENCLOSURE
AQL4	-B100	2D8	P	R8	NL4	E1
AQL4	(blank)	(blank)	(blank) 3 A ATM Fuse	(blank)	(blank)	(blank) Module Only
AQL6	B100	D8	P 2.5 A PTC Polyswitch	R8	NL4	E1
AQL102		2D8		2R8		
AQL104		3D8		3R8		
		4D8				
		5D8				
		6D8				

AQL4 in an E1 enclosure has six module spaces where B100, NL4 and D8/D8P each take up one module space. R8 takes up two module spaces.

AQL6, AQL102 and AQL104 in an E1 enclosure has four module spaces where B100, NL4 and D8/D8P each take up one module space. R8 takes up two module spaces.

Securitron BPS Linear Power Supplies

ITEM	DESCRIPTION	PRICE
BPS-12/24-1	Dual Voltage 12/24 VDC, 1 Amp	\$323
BPS-12-1	12 VDC, 1 Amp	\$261
BPS-12-3	12 VDC, 3 Amp	\$507
BPS-12-45	12 VDC, 4.5 Amp	\$819
BPS-12-6	12 VDC, 6 Amp	\$908
BPS-12-9	12 VDC, 9 Amp	\$1097
BPS-12-15	12 VDC, 15 Amp	\$1351
BPS-24-1	24 VDC, 1 Amp	\$261
BPS-24-2	24 VDC, 2 Amp	\$507
BPS-24-3	24 VDC, 3 Amp	\$766
BPS-24-4	24 VDC, 4 Amp	\$908
BPS-24-6	24 VDC, 6 Amp	\$1097
BPS-24-10	24 VDC, 10 Amp	\$1351
BPSM-12-6	12 VDC, Status Monitor, 6 Amp	\$960
BPSM-12-9	12 VDC, Status Monitor, 9 Amp	\$1150
BPSM-12-15	12 VDC, Status Monitor, 15 Amp	\$1401
BPSM-24-4	24 VDC, Status Monitor, 4 Amp	\$960
BPSM-24-6	24 VDC, Status Monitor, 6 Amp	\$1150
BPSM-24-10	24 VDC, Status Monitor, 10 Amp	\$1401



How to Order

Specify quantity and the following information. Order related products separately.

MODEL SERIES	SWITCH TYPE	VOLTAGE	OUTPUT POWER
BPS	M	- 24	-X
BPS	(blank) No Monitoring	12 12 VDC	X Output in Amps
	M PSM Monitoring	24 24 VDC	

Securitron EcoPower® Sustainable Power Supply

ITEM	DESCRIPTION	PRICE
EPS-05	0.5 Amp, 2 Outputs for Low Power Locks	\$312
EPS-05B	Power Supply Board Only	\$151

Accessories

ITEM	DESCRIPTION	PRICE
B-12-08	Battery — 12 VDC, 0.8 Amp	\$69

How to Order

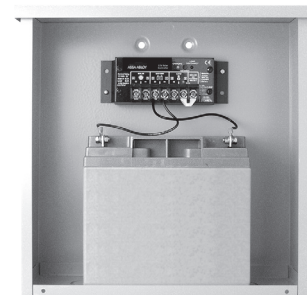
Specify quantity and the following information. Order related products separately.

MODEL SERIES	OUTPUT POWER	OPTION(S)
EPS	-05	B
EPS	05 0.5 Amps	(blank) PS, enclosure, battery
		B Circuit Board Only



Securiton BPSS Solar Power Supplies

ITEM	DESCRIPTION	PRICE
BPSS-10	12 VDC with 10 W Solar Panel and 9 Ah Battery	\$865
BPSS-20	12 VDC with 20 W Solar Panel and 18 Ah Battery	\$980



BPSS Accessories

ITEM	DESCRIPTION	PRICE
PMK-3	Mounting Kit 3 in Pole for CCM Nema Enclosure	\$125
SPK	Solar Panel Kit — 20 W	\$818
SWK	High Wind Kit for 20 W Solar Panel	\$164
B-12-9	Battery — 12 VDC, 9 Ah	\$165
B-12-18	Battery — 12 VDC, 18 Ah	\$213

How to Order

Specify quantity and the following information. Order related products separately.

MODEL SERIES	SOLAR POWER OUTPUT
BPSS	– 10
BPSS Solar Power Supply	10 10 Watts
	20 20 Watts

Securiton AQE Single Port Injector Single-Port PoE

ITEM	DESCRIPTION	PRICE
AQE30	MidSpan Injector, 2.6 Amp, Dual Voltage	\$177
AQE30E	MidSpan Extractor, 0.6 Amp	\$177



How to Order

Specify quantity and the following information. Order related products separately.

MODEL SERIES	POWER	FUNCTION	MOUNTING STYLE
AQE	15		R
AQE PoE	15	(blank) PoE Injector	(blank) Single Port
	30	E PoE Extractor	R Rack Mount Multi-Port

Items can only be ordered as listed above.

Securitron PSP Plug-In Power Supplies

ITEM	DESCRIPTION	PRICE
PSP-12	12 VDC, 700 mA	\$52
PSP-24	24 VDC, 350 mA	\$51
PSP-12-3	12 VDC, 3 Amp	\$102
PSP-24-1.5	24 VDC, 1.5 Amp	\$102



Additional Power Products

ITEM	DESCRIPTION	PRICE
BR-4	Bridge Rectifier — 4 Amp	\$36
B-12-08	Battery — 12 VDC, 0.8 Amp	\$69
B-12-5	Battery — 12 VDC, 5 Amp	\$58
B-24-5	Battery — 24 VDC, 5 Amp	\$119
CKL	Cabinet Key Lock	\$28
CCB-8-12	Central Control Board — 12 VDC, 8 Fused Outputs	\$123
CCB-8-24	Central Control Board — 24 VDC, 8 Fused Outputs	\$123
CFAR-12	Fire Alert Reset Control – Canada — 12 VDC, Board Only	\$88
CFAR-24	Fire Alert Reset Control – Canada — 24 VDC, Board Only	\$89
FAR-12	Fire Alert Reset Control — 12 VDC	\$318
FAR-24	Fire Alert Reset Control — 24 VDC	\$318
PSM-12	Power Supply Monitor — 12 VDC	\$755
PSM-24	Power Supply Monitor — 24 VDC	\$755

Power Transfers

Securiton CEPT Concealed Electrical Power Transfers

MODEL	DESCRIPTION	606	612	613	630
CEPT-10	10 Wire	\$510	\$510	\$510	\$417
EL-CEPT	Electrolynx® Connectors	\$529	\$529	\$565	\$497
CEPT-C5E	CAT-5E	\$560	\$560	\$560	\$466
CEPT-NW	No Wires			\$510	\$417



How to Order *Specify quantity and the following information. Order related products separately.*

WIRE CONNECTORS	MODEL	NUMBER OF WIRES	FINISH
EL	– CEPT	– C5E	– 10B
(blank) No Connectors EL Electrolynx® Connectors	CEPT Concealed	(blank) 12 Wires (for EL CEPT only) 10 10 Wires C5E 9 Wires NW	(blank) 630 Satin Stainless Steel 04 606 Satin Brass 10 612 Satin Bronze 10B 613 Bronze Toned

Securiton SEPT Square-Cut Electrical Power Transfers

ITEM	DESCRIPTION	PRICE
SEPT	Cut Standard Version	\$82
SEPT-10	10 Wire	\$117
SEPT-C5E	CAT-5E Compatible	\$112
EL-SEPT	Electrolynx® Connectors (Compatible with 12-22AWG wires)	\$108



Securitron EPT Electrical Power Transfers

ITEM	DESCRIPTION	PRICE
EPT	10" Cord, Standard Swing	\$73
EPT-SC	10" Cord, Swing Clear	\$110
EL-EPT	ElectroLynx® 10" Cord, Standard Swing	\$113
EL-EPT-SC	ElectroLynx® 10" Cord, Swing Clear	\$148
EPTL	18" Cord, Standard Swing	\$97
EL-EPTL	ElectroLynx® 18" Cord, Standard Swing	\$136

How to Order *Specify quantity and the following information. Order related products separately.*

WIRE CONNECTIONS	SHAPE	DOOR SWING
EL	- EPT	- SC
(blank) No Connectors	EPT 10" Cord	(blank) Standard Swing
EL ElectroLynx® Connectors	EPTL 18" Cord	SC Swing Clear / Pivots CSE 9 Wires

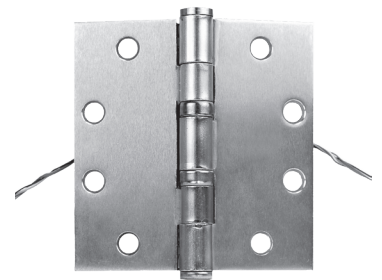


Securitron EH Electric Hinges

ITEM	DESCRIPTION	PRICE
EH-40	6 Wire [4.5" x 4.0"]	\$298
EH-45	6 Wire [4.5" x 4.5"]	\$298

How to Order *Specify quantity and the following information. Order related products separately.*

MODEL SERIES	LENGTH
EH	- 45
EH Electric Hinge	40 4" Length 45 4.5" Length

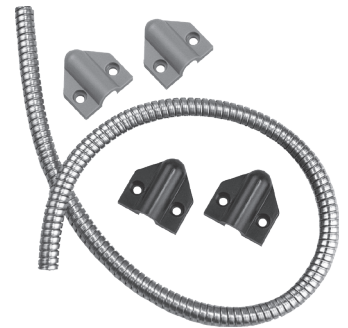


Securitron TSB-C Door Cords

ITEM	DESCRIPTION	PRICE
TSB-C	With Caps, Gray/Black, 18"	\$38
TSB-CXL	With Caps, Gray/Black, 36"	\$47

How to Order *Specify quantity and the following information. Order related products separately.*

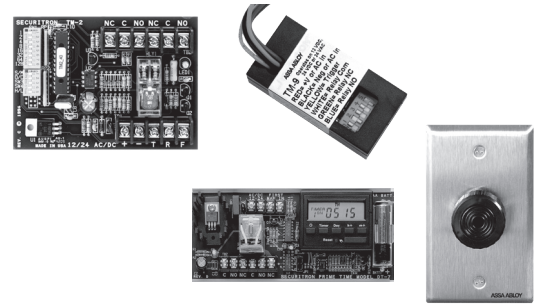
MODEL SERIES	SIZE
TSB-C	XL
TSB-C Door Cord	(blank) 18" XL 36"



Accessories

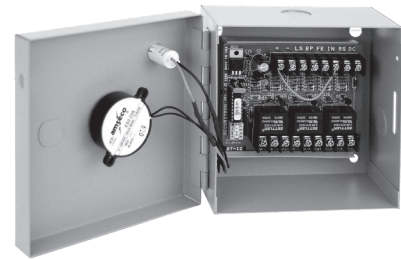
Securiton TM-2, TM-9, DT-7 and PZ1 Timers & Alarms

ITEM	DESCRIPTION	PRICE
TM-2	Multi-Function Timer, 1-255 seconds	\$158
TM-9	Time Mate Timer, 2-36 Seconds	\$81
DT-7	Digital Timer, 7 day	\$255
PZ1	Piezo on Keyplate — Single Gang	\$77



Securiton BA-DPA Drop Prop Alarm Monitoring

ITEM	DESCRIPTION	PRICE
BA-DPA-12	12 VDC with Boxed Alarm	\$278
BA-DPA-24	24 VDC With Boxed Alarm	\$278



How to Order

Specify quantity and the following information. Order related products separately.

MODEL SERIES	VOLTAGE
BA-DPA	- 24
BA-DPA Door Prop Alarm Timer	12 12 VDC
	24 24 VDC

Securiton DPS Door Position Switches

MODEL	DESCRIPTION	BK	GR	W
DPS-M	For Metal Doors	\$33	\$33	\$31
DPS-W	For Wood Doors	\$24	\$24	\$24



Securitron MSS Magnetic Switch/High Security

ITEM	DESCRIPTION	PRICE
MSS-1	Magnetic High Security Switch	\$239
MSS-1-RT	Remote Test	\$280
MSS-1C	Concealed	\$239
MSS-1C-RT	Concealed, Remote Test	\$280
MSS-1G	Surface Mount	\$239
MSS-1G-RT	Surface Mount, Remote Test	\$280



How to Order

Specify quantity and the following information. Order related products separately.

MODEL SERIES	MOUNTING METHOD	SPECIAL FEATURE
MSS-1	C	- RT
MSS Magnetic Security Switch	C Concealed G Surface Mount	RT Remote Test

NOTE: No other combinations of model numbers can be ordered other than what is listed.

Securitron LM Latch Monitors

ITEM	DESCRIPTION	PRICE
LML-1	ANSI, 4-7/8, Strike, SPDT, 3 Amp	\$129
LML-2	ANSI, 4-7/8, Strike, SPDT, 3 Amp, Dual Switches	\$176
LMS-1	ANSI, 2-3/4", Strike, SPDT, 3 Amp	\$129



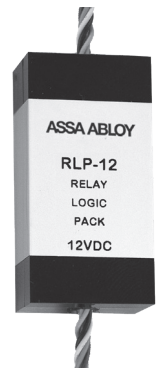
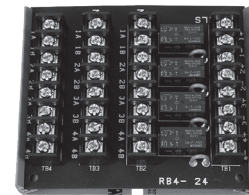
How to Order

Specify quantity and the following information. Order related products separately.

MODEL SERIES	STRIKE SIZE	NUMBER OF SWITCHES
LM	S	-2
LM Latch Monitor	L ANSI 4-7/8" Strike S ANSI 2-3/4" Strike	1 Single Switch 2 Dual Switches

Securitron RLP, RB-4 Relay Logic Packs & Boards

ITEM	DESCRIPTION	PRICE
RLP-12	Relay Logic Pack — 12 VDC	\$64
RLP-24	Relay Logic Pack — 24 VDC	\$61
RB-4-12	Relay Board — 12 VDC	\$126
RB-4-24	Relay Board — 24 VDC	\$126



How to Order Specify quantity and the following information. Order related products separately.

MODEL SERIES	VOLTAGE
RLP	- 12
RLP Relay Logic Pack	12 12 VDC
RB-4 Relay Board	24 24 VDC

ASSA ABLOY

Electronic Security Hardware Warranties

In 1999 Securitron introduced the first no-fault, no questions asked warranty to the industry, MagnaCare®. We believe that the best products in the industry should be supported by our commitment to deliver the highest quality products and services. ASSA ABLOY Electronic Security Hardware proudly extends the most comprehensive no-fault, no questions asked warranty coverage to all of our products and solutions. This is our expectation and commitment to you — our valued customer.



MagnaCare
Warranty

MagnaCare Warranty

Duration: Lifetime

Condition: Any reason, including, but not limited to, installation error, vandalism or force majeure.

Replacement: Replacement product or equivalent shipped at ASSA ABLOY Electronic Security Hardware expense via next day air freight in most cases.

Products Covered:

- Electromagnetic and Specialty Locks
- Power Supplies (excluding BPSS) and Power Transfers
- Push Buttons, Keypads, Keyswitches and Egress Devices



SecuriCare
Warranty

SecuriCare 10-year Warranty

Duration: Ten years from date of shipment

Condition: Any reason including, but not limited to, installation error, vandalism or force majeure

Replacement: Replacement product or equivalent shipped at ASSA ABLOY Electronic Security Hardware expense via next day air freight in most cases.

Products Covered:

- HES 1500, 1600 Electric Strikes
- When installed with a HES Smart PAC III, the following electric strikes are upgraded to the 10-year warranty:
 - » HES 1006, 4500, 5000, 5200, 7500, 8000, 8300, 8500, 9400, 9500, 9600, 9700, 9800, HES Folger Adam 310, 712, 732, 742 Electric Strikes
 - » Integrated Wiegand Electric Strikes



SecuriCare
Warranty

SecuriCare 5-year Warranty

Duration: Five years from date of shipment

Condition: Any reason including, but not limited to, installation error, vandalism or force majeure.

Replacement: Replacement product or equivalent shipped at ASSA ABLOY Electronic Security Hardware's expense via next day air freight in most cases.

Products Covered:

- HES 1006, ES100, 4500, 5000, 5200, 7500, 8000, 8300, 8500, 9400, 9500, 9600, 9700, 9800, HES Folger Adam 310, 712, 732, 742 Electric Strikes
- Integrated Wiegand Electric Strikes
- Securitron MUNL, UNL Electric Strikes



SecuriCare
Warranty

SecuriCare 3-year Warranty

Duration: Three years from date of shipment

Condition: Any reason, including but not limited to, installation error, vandalism or force majeure

Replacement: Replacement product or equivalent shipped at ASSA ABLOY Electronic Security Hardware's expense via next day air freight in most cases.

Products Covered:

- Aperio® Wireless Products ES100, K100, KS100, R100
- HES 610, 660, K20, KP20, Cabinet Locks
- Integrated Wiegand Cabinet Locks HES K200, KS200, 630REL, K200-630REL
- BPSS Solar Power Supplies
- Accessories

ASSA ABLOY Electronic Security Hardware Warranties apply to products shipped on or before January 1, 2018. Check your individual product to determine warranty coverage. Batteries and consumables are not covered by ASSA ABLOY Electronic Security Hardware Warranty programs. Replacement products, at ASSA ABLOY Electronic Security Hardware's sole option, may be the identical item or a unit which serves as a functional replacement. If the customer has an account with ASSA ABLOY Electronic Security Hardware or a valid credit card, the customer may order an advance replacement product, whereby ASSA ABLOY Electronic Security Hardware will charge the customer's account for the price of the product plus next day air freight, and will credit back to the customer the full amount of the charge, including outbound freight, upon ASSA ABLOY Electronic Security Hardware's receipt of the original product from the customer. ASSA ABLOY Electronic Security Hardware's sole and exclusive liability, and customer's sole remedy, is limited to the replacement of the ASSA ABLOY Electronic Security Hardware product when delivered to ASSA ABLOY Electronic Security Hardware's facility (freight and insurance charges prepaid by customer).

ASSA ABLOY

Electronic Security Hardware Terms & Conditions

PRICES: All prices are subject to change without notice. Prices listed on assaabloyesh.com will serve as the most current list price. All shipments will be made at prices in effect at the time of shipment. The customer shall be responsible for payment of all applicable sales and/or use taxes and freight costs.

MINIMUM ORDER: Minimum product charge per invoice is \$150.00 USD.

PAYMENT TERMS: Net thirty (30) days from date of invoice. Interest at the rate of up to 1-1/2% per month may be charged on all past due accounts. An order received on an account which has not been paid within 45 days of the date of invoice may not be processed until the account is current. Custom orders may require a deposit.

DELIVERY TERMS: All prices are Ex-works factory. Purchaser assumes the risk of loss or damage to the goods while in transit from the point of shipment. ASSA ABLOY Electronic Security Hardware reserves the right to make delivery in installments. Installments shall be separately invoiced and paid for when due. Delay in delivery of an installment shall not relieve the purchaser of its obligation to accept remaining deliveries.

SHORTAGE: Any claim for shortages must be made to ASSA ABLOY Electronic Security Hardware in writing within one (1) week of receipt of merchandise.

WARRANTY RETURNS: A Customer Care Form (CCF) for defective product must be obtained from ASSA ABLOY Electronic Security Hardware before any merchandise can be returned. CCF's are valid for sixty (60) days from date of issuance. Goods returned under the terms of MagnaCare® and SecuriCare Warranties may require a copy of the original invoice.

RETURNS: A Customer Care Form (CCF) must be obtained from ASSA ABLOY Electronic Security Hardware before any merchandise can be returned. CCF's are valid for sixty (60) days from date of issuance. Items that are not factory sealed, or that are returned later than ninety (90) days from the date of receipt are subject to a restocking charge plus an additional charge for any damage.

CANCELLATIONS: Any order may be subject to a 5% cancellation charge for catalog items. Cancellation of non-catalog or custom items will be subject to a 20% cancellation charge plus all costs (both direct and indirect) incurred by manufacturing at the point of cancellation that are properly allocated to the canceled item(s).

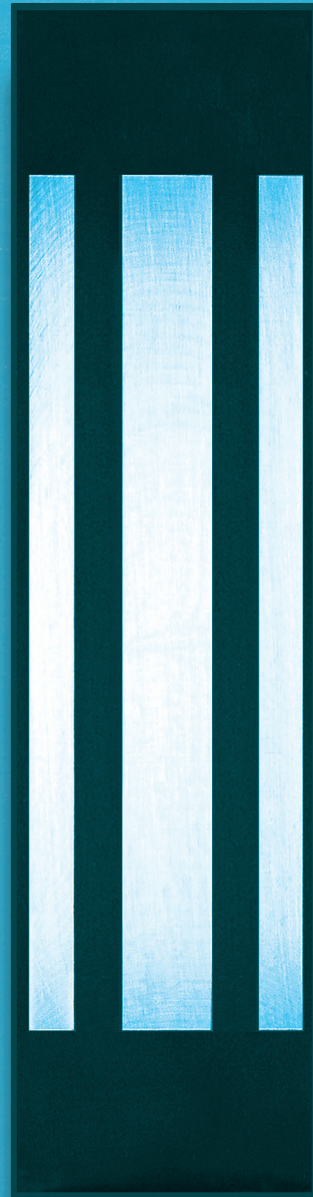
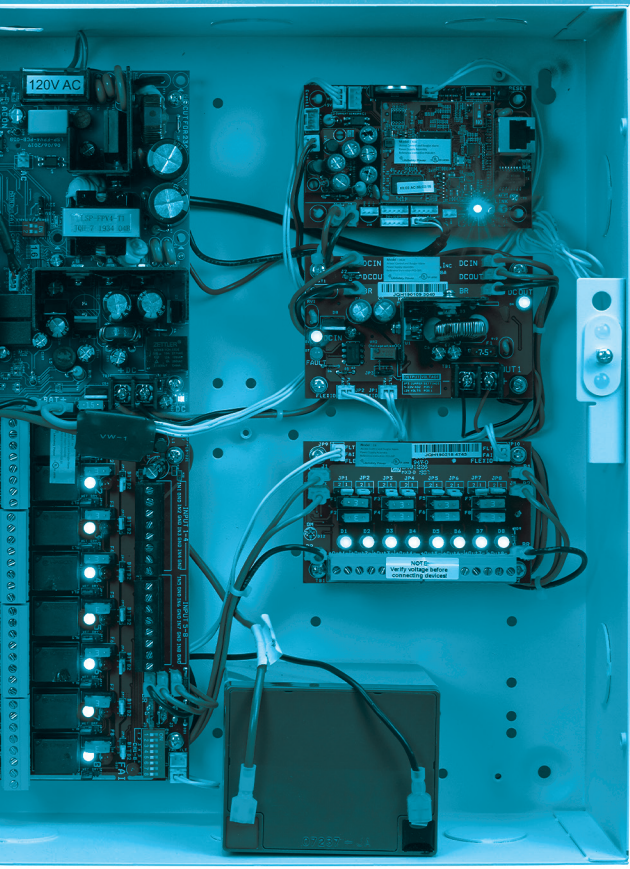
LIMITATION OF LIABILITY: Neither party will be liable to the other for any delay or failure in performance arising directly out of war, sabotage, insurrection, riot, and any other act of civil disobedience, act of public enemy, fire, explosion, flood, storm, or other act of God or nature, or similar cause beyond its reasonable control, including shortage or unavailability of labor or materials. If, notwithstanding the foregoing limitations, ASSA ABLOY Electronic Security Hardware has any liability to the purchaser, the purchaser agrees that the total liability to the purchaser for all losses, damages, and causes of action, whether in contract, equity, tort (including without limitation, negligence and gross negligence), or otherwise, will not exceed the amount the purchaser paid to ASSA ABLOY Electronic Security Hardware for the products (including, without limitation, incidental or consequential damages, damages for lost profits or business interruption, and punitive damages).

NO THIRD PARTY LIABILITY: If the purchaser uses the ASSA ABLOY Electronic Security Hardware Products on behalf of others or provides to others any products referenced herein, the ASSA ABLOY Electronic Security Hardware Parties shall have no liability to such persons whatsoever, and the purchaser agree to defend and indemnify the ASSA ABLOY Electronic Security Hardware Parties from any and all claims and demands asserted against them, and from any legal fees, costs and other expenses that the ASSA ABLOY Electronic Security Hardware Parties incur therewith.

Customers purchasing from Door Security Solutions Canada can find Canadian terms and conditions at www.assaabloy.ca/terms

The ASSA ABLOY Group is the global leader in access solutions. Every day we help people feel safe, secure and experience a more open world.

ASSA ABLOY
Opening Solutions



ELECTRONIC SECURITY HARDWARE

HES | Securitron

USA

800 626 7590 | f. 866 582 4641 | assaabloyesh.com
customerservice.esh@assaabloy.com
techsupport.esh@assaabloy.com
orders.esh@assaabloy.com

CANADA

800 461 3007 | f. 800 461 8989 | assaabloydss.ca
sales.dss.ca@assaabloy.com
orders.dss.ca@assaabloy.com

Patent pending and/or patent
www.assaabloydss.com/patents

Copyright © 2021, Hanchett Entry Systems, Inc., an ASSA ABLOY Group company. All rights reserved.
Reproduction in whole or in part without the express written permission of Hanchett Entry Systems, Inc. is prohibited. ESH-70-0421

